



9th Edition

Hendry County Guide

2021



EAT A TREE!

JOIN US ANNUALLY
LAST FULL WEEKEND IN FEBRUARY

A Hometown Event that honors time old traditions and Florida's state tree, and the heart of Sabal Palm.

| | |
|--------------------|-----------------|
| Music | 5K Run |
| Games | Armadillo Races |
| Parade | Pageant |
| Food | Clogging |
| Rodeo | Bike show |
| Fishing Tournament | & much more! |

The 55th Annual festival Presented by our Sponsors!

M.J. NEWELL
Building American Homes



PO Box 2081 LaBelle, FL 33975 www.labelleswampcabbagefestival.org 863.675.2995

Table of Contents

"From Coast to Coast"

Explore the Lake Okeechobee Waterway 4

Attractions in and around Hendry County

Places to Visit 6

Why Choose Hendry County?

We offer an ideal location for businesses! 10

"Best of LaBelle" LaBelle continues to see

new construction. 12

est. 1923 The history of Florida's

63rd County 16

"Sweetest Town" welcomes visitors and

growth. 20

A College Education Close to Home

Florida SouthWestern State College 22

Dining Guide

. 24

Festivals and Celebrations in the Area

Events for the whole family 28

Taking History into the Future

Clewiston Museum. 30

Students First Hendry County welcomes new

Superintendent. 32

Hendry County School Listings

. 32

Hendry County School Board

. 33

Parks and Trails

Enjoy the Outdoors. 34

RV Resorts and Campgrounds

. 36

City Commissioners

. 38

County Commissioners

plus Government Listings 39

A Unique Way of Life Hendry County 40

. 42

COVID-19 Testing and Vaccinations

. 42

LaBelle - We're Growing

. 45

Jet Fueling the Economy

. 46

Welcome to Our Communities

Hendry County is a special place. It is located in one of the most unique ecosystems in the world, and yet it draws – it does not shrink from – its sense of place. Here, beautiful sunsets against lakes and rivers impress on a daily basis, the opportunities to enjoy nature's offerings are nearly limitless, and the sense of community here drives a flourishing, growing community. Join us as we look at what makes Hendry County a destination for businesses, residents, and newcomers.

Guide to Hendry County

A special publication of Independent Newsmedia Inc., publisher of Caloosa Belle and Lake Okeechobee News serving Hendry County since 1922.

9th Edition

| | |
|-----------------------|------------------|
| Publisher | Katrina Elsen |
| Advertising Manager | Jaime Limoges |
| News and Ad Services | Dale Conyers |
| Pagination Artist | Kris Schwartz |
| Reporter/Photographer | Danika J. Hopper |
| Advertising Services | Barbara Calfee |
| | Jennifer Froman |
| | Stephanie Larson |
| | Kay Sheedy |

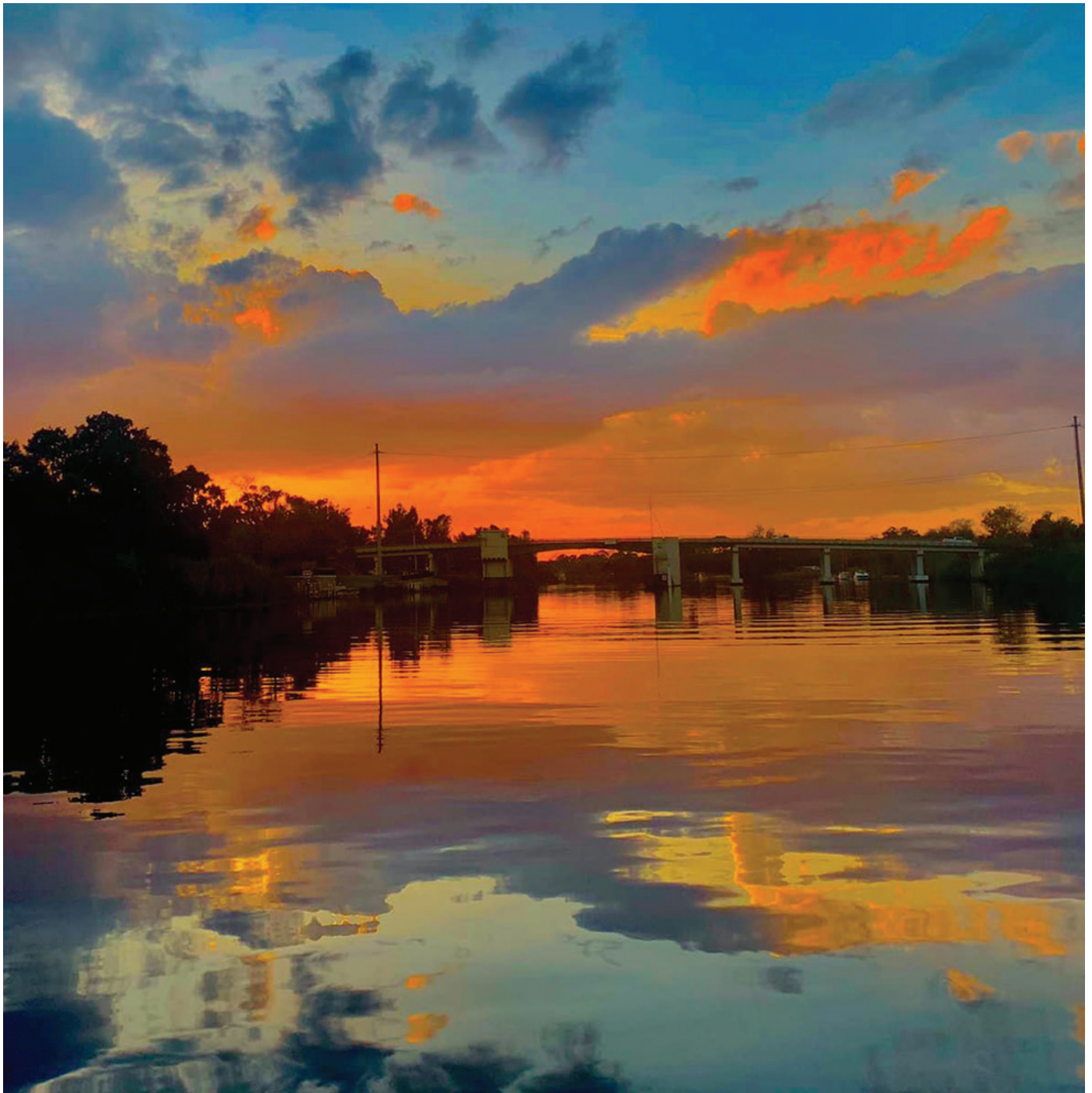
Contact Us

Mail: P.O. Box 518, LaBelle, FL 33975
 Location: 22 Ft. Thompson Ave., LaBelle, FL 33975
southcentralfloridalife.com
 News/Subscribe: (863) 675-2541
 Display Advertising: (863) 225-4543



On the cover ...

Groundbreaking photo: courtesy of the Economic Development Council, Hendry County Courthouse photo: staff photographer, Gator photo: courtesy of FWC, Fishing boat: courtesy photo, all other photos are taken by Dale Conyers.



INI/Danika J. Hopper

From Coast to Coast

Explore the Lake Okeechobee Waterway

Florida boaters can travel from the east coast to the west coast via the Lake Okeechobee Waterway.

The 154-mile-long waterway extends from the Atlantic Ocean at Stuart, to the Gulf of Mexico at Fort Meyers. The

waterway runs through Lake Okeechobee and consists of the Caloosahatchee River to the west of the lake and the St. Lucie

Canal east of the lake.

Much of the waterway is man-made. Nature did not connect the St. Lucie River to the ocean. The connection between Lake Okeechobee and the St. Lucie is man-made, as is the channel connecting Lake Okeechobee to the Caloosahatchee River. In the days before paved roads, early pioneers used the waterways as liquid highways. Riverboats carried passengers back and forth between rural heartland and the coastal cities. Boats also hauled produce from rural farms to market and supplies back to the interior.

Today, instead of steamships hauling freight and passengers, the Lake Okeechobee Waterway is used for recreational boating and fishing, and most boaters use the ActiveCaptain application to navigate. Go to <https://activecaptain.garmin.com/en-US/pois/17709> to learn more about it.

There are five locks on the waterway. From east to west they are the St. Lucie Lock, the Port Mayaca Lock, the Moore Haven Lock, the Ortona Lock and the W.P. Franklin Lock. These locks, operated by the U.S. Army Corps of Engineers, are operated 7 a.m. to 5 p.m. daily. The last lockage of the day begins at 4:30 p.m.

The City of LaBelle offers three free days' dockage, including water and power service.

Twenty-five bridges cross various points along the Lake Okeechobee Waterway. Eleven of these bridges open for boat traffic. The lowest of the fixed bridges is the Port Mayaca Railroad Bridge with a vertical clearance of 49 feet. Sailboats that are too tall to clear the bridge are sometimes helped under the bridge by means of the "Okeechobee limbo." The website offshoreblue.com explains: "A crew out of the Indiantown Marina will meet your boat at the bridge and by use of plastic 50 gallon drums lined up along your rail and filled with water, list your vessel enough to pass under the Port Mayaca RR Bridge. Once through, the drums are emptied and removed from your boat and you are on your way. The whole process generally takes less than an hour."

The Okeechobee Waterway is usually open year-round, but during the dry season there are sometimes restrictions based on the depth of the water. Tropical storms and hurricanes can also result in some closures on the waterway.

Hendry County is home to U.S. Army Corps of Engineers South Florida Operations Office, 525 Ridgeland Road in Clewiston, FL 33440-5399, telephone: 863-983-8101.



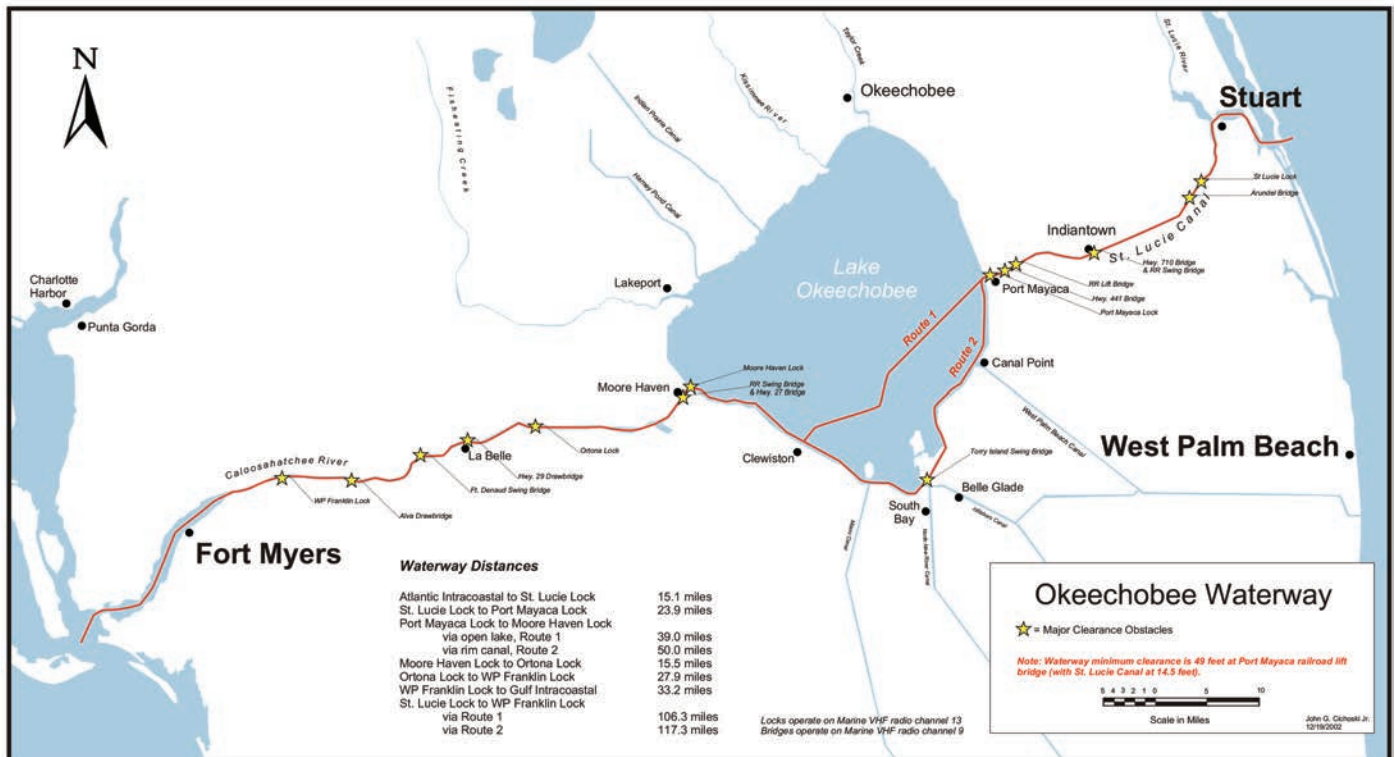
INI/Dale Conyers

Florida's summer rains cause the Ortona Locks to be open at full capacity part time to prevent Lake Okeechobee from reaching such high levels.

Lock Operators:

| | |
|---------------|--------------|
| W.P. Franklin | 239-694-5451 |
| Ortona | 863-675-0616 |
| Moore Haven | 863-946-0414 |
| Port Mayaca | 561-924-2858 |
| St. Lucie | 772-287-2665 |

Sources: U.S. Army Corps of Engineers and the website offshoreblue.com.



Courtesy US Army Corps of Engineers

Attractions in and around Hendry County

Places to Visit

BIG 'O' GUIDE SERVICE A scenic Eco-Tour on Lake Okeechobee. See alligators, manatees, pelicans, exotic birds and more. Located at Roland Martin's Marina and Resort at 920 W. Del Monte Ave., Clewiston. You can reach them at 863-983-3151 or visit them online at rolandmartinmarina.com.

BILLIE SWAMP SAFARI Take a swamp buggy or airboat tour at Big Cypress Seminole Indian Reservation. They are located at 30000 Gator Tail Trail, Clewiston. You can reach them at 1-800-GOSAFARI or visit billieswamp.com.

WALKING/BIKING TOUR Four self-guided trails all start from the Clewiston Inn and wander through residential areas of Clewiston at 108 Royal Palm Ave., Clewiston. For more information, please call 863-983-7979.

DINNER ISLAND RANCH Outstanding wildlife viewing awaits at this vast acreage site. It offers fishing, hiking, cycling, camping, hunting, horseback riding and scenic driving. They are located 29 miles southwest of Clewiston off of County Road 833.



STA 5 BIRD-WATCHING In partnership with Hendry-Glades Audubon, the South Florida Water Management District offers escorted birding tours at the South Florida Birding Trail. STA 5 is ranked one of the best bird watching areas in the country. No reservations required for walking or bicycling visits to these areas. For directions and information, please call 863-674-0695 or 863-517- 0202. The Clewiston Museum also offers a "Historical Eco-Tour" and STA 5 Fridays. For van tour schedules, email clewistonmuseum@embarqmail.com.

AUDUBON SOCIETY Birding organization for Hendry, Glades and Okeechobee counties. Hendry County Tourism sponsors the annual Big 'O' Birding Festival in March. Memberships are available. For more information, please call 863-674-0695 or 863-517- 0202. Visit their website at hendrygladesaudubon.org.

JACOB'S FLIGHT SERVICES Experience beautiful Lake Okeechobee and surrounding areas from the sky. Offered are designed, packaged scenic tours for you to enjoy the most popular sights they have to offer. You can also customize your own tour and see the destinations you choose. They are located at 3200 Airglades Blvd., Clewiston. You can reach them at 855-JFS-FLYS. Visit their website at jacobsflightservices.com.

FLORIDA RIDGE AIRPORTS PARK A hang gliding and ultra light facility offering a variety of tandem sky rides, pilot services and instruction. They are located at 12671 E. State Road 80 in Clewiston. You can reach them at 863-805-0440. You can visit their website at thefloridaridge.com.

SKYDIVE SPACELAND Experience the thrill of diving from 14,000 feet and taking in the view of Lake Okeechobee. This park is located at 1090 Airglades Blvd. in Clewiston. Call them at 800-533-6151 or visit their website at skydivespaceland.com.

DEVIL'S GARDEN MUD CLUB Complete mud park with 1,200 acres of mud activities including mud holes, swimming holes, airboat track, mud flats, mud sand track, truck pulls, camping areas, family areas and miles of trails. You can reach them at 1-800-551- 4375. You can visit their website at devilsyardenmudclub.com.



SILVER LAKE PRESERVE This beautiful 1,876-acre tract offers a customized hunting program with some of the best year round native wildlife opportunities in South Florida. The Silver Lake Lodge can accommodate 10 guests and offers several amenities. They are located at 2860 Silver Lake Rd. N.W. in LaBelle. You can reach them at 863-273-7712. You can visit their website at silverlakepreserve.com.

SPIRIT-OF-THE-WILD WILDLIFE MANAGEMENT AREA Nature enthusiasts will want to visit this site because of the year round viewing of wildlife for which the area is known. The area offers fishing, hiking, biking, horseback riding and scenic driving. It is located 12 miles south of LaBelle on County Road 832.

STARGAZING Starry nights are a common occurrence in Hendry County. You don't need a telescope to stargaze. Just good weather. Walk out on the dike, or to the fields and you will see thousands of stars. For more info, please visit stargazers.org.

CLEWISTON MUSEUM The Clewiston Museum is located at 109 Central Avenue, Clewiston, Florida. It houses exhibits highlighting the local area, including: Fossils, Sugar, Cattle Industry Firsts, Commercial Fishing, Flying Brits, Killer Hurricanes and Seminole Indians. You can reach them at 863-983-2870. You can visit their website at clewistonmuseum.org. Email: clewistonmuseum@embarqmail.com.



AH-TAH-THI-KI MUSEUM Nestled in the heart of the Everglades, the Ah-Tah-Thi-Ki Museum is home to more than 30,000 unique artifacts selected to celebrate, preserve and interpret the rich history and culture of the Seminole Tribe of Florida. Ah-Tah-Thi-Ki means 'a place to learn, a place to remember' in the Seminole language, and while the COVID-19 pandemic has forced the museum to close to the public until further notice, they do offer virtual tours via their website and portions of the museum's collection can be viewed online. Recordings of the oral history of the Tribe and items from the gift shop are also available on the website. To learn more, please visit ahtahthiki.com.



CAPTAIN HENDRY HOUSE Added to the National Register of Historic Places in 1993, Hendry House was the home of Francis A. Hendry, the "Father of LaBelle." It is located at 512 Fraser Ave in LaBelle. For more information, please call 863-675-2872. For more info on the history, please contact the LaBelle Heritage Museum at 863- 674-0034. You can visit their website at labellenaturepark.net.



LABELLE CITY DOCKS Overlooking the south side of the Okeechobee Waterway, just west of the LaBelle bridge. The City of LaBelle provides these docks, complete with electric and water, free of charge. All vessels are welcome 3 days in, 8 days out. Close proximity (walking distance) to downtown LaBelle for shopping, restaurants, and fuel. For more information please call (863) 673-1191. Visit the city's website at citylabelle.com.

BELLE HATCHEE MARINA Specializing in multi-hull haul out located in a hurricane protected area. Freshwater marina with no tides. Do-it-yourself boat work yard with 24 hour access. Inland boat storage in hurricane protected area. Ships Store on the premises. Shopping, restaurants and motels near by. Located at 121 Riverbend Drive in LaBelle. They can be reached at 863-674-1772 or 817-965-2302, or go to bellehatcheemarina.com.

LABELLE FOSSIL CAMP Fossil hunting and guided eco-tours via sailboat, canoe, or kayak. Adventures take place along the Caloosahatchee River, where you're 100% guaranteed to find fossils. It's a once in a lifetime trip through Florida's ancient past. Learn about the history of the River, search for bivalves and gastropods from 6 million years ago, and fossils from ancient tortoises and turtles, garfish, paleo camels and horses, mammoths, glyptodonts, smilodons, and giant ground sloths. Creatures that roamed the Earth nearly 2 million years ago!!!!

Social distancing practiced and masks worn. Located in the heart of LaBelle. Book your adventure by email or phone: LabelleFossilCamp@gmail.com, (863) 417-9333 call or text

PORT LABELLE MARINA

Located on Okeechobee (Intracoastal) Waterway East of the LaBelle Bridge. This secluded marina offers fuel, electricity at the main dock, pump-out facility at the main dock, laundry, and men/women restrooms and showers. Located at 1152 Marina Drive in LaBelle. You can reach them at (863) 675-2261. Visit their website at portlabellemarina.com.



HENDRY GLADES LEADERSHIP

A PROGRAM DESIGNED TO PREPARE COMMUNITY LEADERS

Today's regional challenges require a new problem-solving capacity and the ability to work across political, geographical and institutional boundaries.

Through Leadership Hendry and Glades Counties (LHG), leaders develop a broader awareness of the region in which they live, work and play. They acquire a greater knowledge of the diverse communities that constitute this rural part of the Southwest Florida region. The program focuses on topics relevant to current trends and issues.

To Register or For More Information

Give us a call at 863-675-6007
Or Email Us At
olivia@hendryedc.com



ROLAND AND MARY ANN MARTIN'S MARINA & RESORT

Roland and Mary Ann Martin's Marina and Resort provides everything for the fisherman and boater. The marina features 20 of the nation's top notch fishing guides, many lodging choices, ample floating dockage, a fleet of rental boats, 130 covered boat slips, fuel, bait, supplies, a tiki bar with live entertainment/ karaoke and a restaurant. They are located at 920 E. Del Monte Ave. in Clewiston. You can reach them at 863-983-3151 or 1-800-473-6766. You can visit their website at rolandmartinmarina.com.

UNCLE JOE'S FISH CAMP Located in an off-the-beaten path area of Lake Okeechobee, Uncle Joe's offers cabins, plus groceries, tackle, live bait, docks and boat ramps with direct access to the lake. They are located at 1699 Griffin Road in Moore Haven. Reach them at 863-983-9421 or 863-983-4818.



CLEWISTON GOLF COURSE A beautifully maintained, championship 18-hole golf course that is open to the public. Designed in the Donald Ross Style, the course is a classic and can be enjoyed by the amateur golfer or the seasoned professional. They are located at 1201 San Luiz Ave in Clewiston. You can reach them at 863-983-1448.

HENDRY COUNTY MOTORSPORTS PARK Get ready for thrilling excitement on the Everglades clay at the Hendry County Motorsports Park, the southernmost raceway in the USA. They are located at 9985 West Hwy. 27 (9.5 miles north of Clewiston on U.S. 27). You can reach them at 863-983-3478. Or visit their website at hendryracing.com.

THE BARRON PARK HOUSE GALLERY AND GIFT SHOP is housed in the historic Christie House which was built in 1914. Local artists exhibit their oil, watercolor, acrylic, and mixed media paintings, sculptures, and photography. Exhibits are rotated monthly. Worth a visit for any art fan. It's hidden in the north east corner of Barron Park, at 471 N. Lee St. You can reach them at 239-843-2929. You can visit their website at artsinland.com.

FIREHOUSE THEATRE The Firehouse Community Theatre has been providing a unique cultural experience in the area for over 21 years. The theatre is staffed completely by volunteers from our communities. They are located at 241 N. Bridge Street in LaBelle. You can reach them at 863-675-3066. You can visit their website at firehousecommunitytheatre.com.

DOLLY HAND CENTER Located at the Palm Beach State College Campus, the Dolly Hand Cultural Arts Center and Theatre holds a roster of performances designed to offer an "escape from the everyday." They are located at 1977 College Drive in Belle Glade. You can reach them at 561-993-1160. Or visit their website at dollyhand.org.

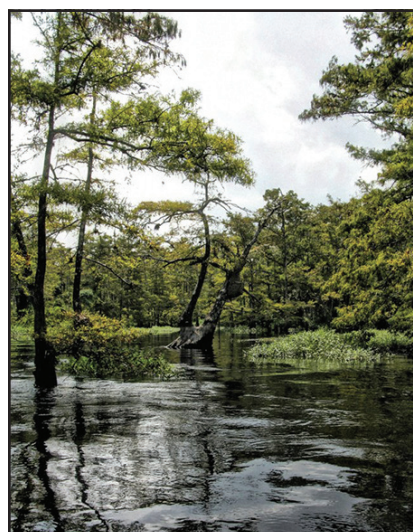
OKEECHOBEE SCENIC TRAIL Designated as a segment of the Florida National Scenic Trail, this route circles the second largest freshwater lake in the contiguous United

States. The trail runs on top of the Herbert Hoover Dike and provides views ranging from scenic lakeside to working agricultural landscapes. There are numerous locations for access by hikers and bikers, as well as equestrians. Not all areas are paved and some portions close at irregular intervals, so please call 863-983-8101 for the latest information.

BIG WATER HERITAGE TRAIL The trail's name, the Big Water Heritage Trail, stems from the Seminole word for Okeechobee, which means, "Big Water." This successful project, implemented in 2003, is a heritage trail that identifies, links and marks sites of historical, cultural, natural, recreational and educational importance to the area. The Big Water Heritage Trail encompasses five counties surrounding Lake Okeechobee in Florida. For more information, please call 863- 983-7979.

OKALOACOOCHEE FOREST The Okaloacoochee Slough State Forest contains nearly 35,000 acres, mostly in Hendry County, which extends northward near the Caloosahatchee River and southward about 50 miles into Big Cypress Swamp. There are 38 miles of trails open for wildlife viewing, hiking, non-motorized biking, and horseback riding. Also available are four campgrounds. To learn more, call 863-612- 0776.

FISHEATING CREEK OUTPOST



The licensed concessionaire of the Fisheating Creek Wildlife Management Area provides recreational and educational opportunities to the public under contract of the Florida Fish and Wildlife Conservation Commission. Now offering camping, canoeing, paddling, hiking, and eco-adventures. RV/tent sites are available. You can reach them at 863-675-5999. You can also visit their website

at fisheatingcreekoutpost.com.

GATORAMA Gatorama is a family-friendly Eco Adventure Park and licensed gator farm in the heart of the Everglades. The focus is on family, fun and education; food and drink, too, available from a food truck inside the park. The owners and staff invite you to play wild, get dirty and get up close and personal with Florida's apex predators. Both alligators and crocodiles live here in the Sunshine State, the only place on Earth where they exist side by side in the wild. See the Big Gator Feed Show, try your luck at our Fast Hands or No Hands Challenge or participate in one of their "Gatorventures." Located at 10665 N. U.S. 27 in Palmdale, Gatorama can be reached seven days a week at 863-675-0623. Or learn more by going online to gatorama.com.



First¹Bank

MEMBER F.D.I.C.

Since 1922

***It's A Great Time
To Buy A Home In
Hendry County - Visit Us First!***

300 East Sugarland Highway, Clewiston (863) 983-8191

101 S. Berner Road, Clewiston (863) 983-3003

301 Highway 80 West, Labelle (863) 675-4242

Serving SW Florida Since 1922!

Member
FDIC

first1bank.com



NMLS Registry Number - 423166

Why Choose Hendry County?

We offer an ideal location for businesses!



Submitted photo/Hendry County Economic Development Council

Groundbreaking for the new terminal building at LaBelle Municipal Airport took place in March of 2020.

By Keitha Daniels

Director of Hendry County Economic Development Council

Hendry County's location is ideal for businesses who want connectivity. Located just south of Lake Okeechobee, we're within 90 minutes of the southwest and southeast coasts of Florida. Hendry County has a direct route to Central Florida via one of the state highways that run through the county. There is the Class 1 rail service and state and highways that link to major international airports on both coasts and seaports on the Atlantic and Gulf of Mexico.

We're fortunate to have access to several educational institutions that offer everything from certificate programs to full college degrees. In 2019, Hendry County ranked #1 amongst all rural counties in the State for certifications awarded through the Hendry Workforce Development and Adult Education School, making it easy for employers to find the skilled workforce they are looking for.

More and more, the emerging workforce of young families want a simpler, organic living, and a laid back lifestyle with a connection to nature. Hendry County



Submitted photo/Hendry County Economic Development Council

Hendry County officials attended a ribbon cutting ceremony for the new terminal building at LaBelle Municipal Airport.

delivers that. There are miles of trails, parks, and untouched Florida land here for exploration. Plus, we're not far from larger, more urban areas which expands shopping and entertainment opportunities. Being centrally located between coasts, we like to say we are in the middle of everywhere — because we are!

Hendry is a younger, family-oriented community. The median age is 35 and 25% of our population is under the age of 18, which means that there are plenty of family friendly events year round. From festivals to local markets, Hendry County has something for everyone.

Low crime rate and a lower cost of living are only a few additional reasons to live, work, and play here in Hendry County. There are plenty of opportunities for house seekers looking for an economical alternative to other areas of Florida. Our population continues to increase as we are seeing an inland movement of businesses and residents. Hendry County is well suited for agricultural-based businesses and we always welcome the opportunity to meet with new companies exploring opportunities here.

Commercial farming and agriculture are our largest industries, but in recent years, we have been seeing a rise in manufacturing and distribution companies choosing Hendry. Also, as Airglades Airport develops, those industries will find success here and will continue to foster an environment where they can succeed, having a significant impact on our area in terms of new jobs and growth. We are excited to see what the future holds!

Hendry County is a community rich in beauty and charm. Our business-friendly and family-friendly culture sets us apart. We are close enough to major cities yet far enough to provide a more relaxed quality of life. New businesses, new residents, and even visitors are welcome.



Submitted photo/Hendry County Economic Development Council
Hendry County's Workforce and Adult Education offers programs and certifications in many different fields, including welding.



Full Service Auto Repair Shop



ACDelco®

**737 South Bridge Street
LaBelle, FL 33935**

863.675.1032

Best of LaBelle

LaBelle continues to see new construction

By Alexis Crespo

Planning director, City of LaBelle

The City of LaBelle continues to see exciting development projects and public improvements coming to fruition. In 2020, the City Commission approved several new residential projects, including multi-family development in South LaBelle Village south of Helms Road, and a new 7-Eleven on the Seacoast Bank property near Downtown. There has been interest from developers to bring several new retail projects, a hotel, and medical facility to town as well.

An exciting development is the new construction occurring at the “Belle Arbor” community under development at Shady Oaks Avenue and Hickpochee Avenue. The residential community is underway behind the LaBelle Brewing Company and will provide much needed new single-family housing to the community. Development and permitting applications continue to be reviewed by city staff under the direction of Superintendent of Public Works Gary Hull, and assisted by City Planner Alexis Crespo, AICP. The City is working on a streamlined and coordinated permitting process that incorporates Fire Department and Building Department Review at the outset of projects to ensure a smooth process for Applicants. LaBelle’s staff remains committed to a high level of customer service and working with property owners to achieve workable solutions and consensus.

LaBelle’s development process and procedures are guided by the City’s Comprehensive Plan, which can be accessed on the city’s website, www.citylabelle.com, and the Land Development Code (LDC) located on Municode. Every property in the city is designated within a specific future land use category, that guide whether a property can be used for residential, commercial, industrial, public or a mix of land uses. Similarly, the zoning map classifies each property by zoning district and corresponds to district regulations in the Land Development Code that specify how development can occur on the property, including setbacks, minimum home sizes, landscaping requirements, and other development information. The City continues to update its codes to be up to date with current standards and ensure quality development. As an example, the City Commission is currently strengthening the protection of the historical heritage oak trees throughout town to uphold the special character of LaBelle.

A key project completed by the City over the past year is the extension of sanitary sewer throughout several residential neighborhoods. The City continues to focus on infrastructure improvements for sewer, water, drainage and roads to provide the citizens of LaBelle with a high level of service. The City was recently awarded additional funding to continue its work expanding utilities throughout town.

If you’re considering a project in LaBelle, or just need access to information, the city’s website is a key resource. City staff also offers pre-application meetings at no cost to the applicant to discuss development proposals and provide information regarding the applicable regulations and the



INI/Dale Conyers

The 7-11 site is well under construction at their South Main Street location, across from Winn-Dixie.



INI/Dale Conyers

Oakwood Terrace, a 56 unit apartment complex with an additional 15,000 square foot commercial/retail space.



INI/Dale Conyers

The new home for the existing Subway Sandwich Shop this location will also have several other spaces available for rent where businesses can operate.

permitting process. For more information, please visit the city’s website at citylabelle.com.

HENDRY COUNTY PROPERTY APPRAISER DENA R PITTMAN CFA

Serving all of Hendry County Residents & Business Owners at both locations



OUR QUALIFIED STAFF IS READY TO SERVE
YOU WITH EXCELLENCE

PLEASE STOP BY OR CALL WITH ANY
NEEDS OR QUESTIONS YOU MAY HAVE

New business in town?
Contact us to ensure you receive your
tangible exemption.

Let us help you!

Dear Taxpayer,
I am honored to serve you with utmost respect and integrity. I look forward to
meeting you and trust that your experience with our office meets your needs and
expectations. Please feel free to contact me by phone: 863-675-5270 or email:
hcappraiser@hendrypa.com
Sincerely,
Dena R Pittman CFA

Welcome New Home Owners

Thank you for choosing Hendry County. Our goal is to ensure you receive all the
tax savings you are entitled to.

Please visit one of our offices or for more information view us at hendryprop.com.

| IF YOUR ASSESSED VALUE IS... | YOUR EXEMPTION WILL BE... |
|------------------------------------|---------------------------------|
| \$ 75,000 and up | \$50,000 |
| \$ 50,000 - \$ 75,000 | UP TO \$50,000 |
| \$ 1 - \$ 50,000 | UP TO \$25,000 |

Homestead Exemption does not automatically transfer to your new home,
you must apply.
Don't miss out, apply now!

If you have recently purchased
property and would like to apply for ag
classification, we begin accepting
applications in January.

NOTE: Ag classification is non
transferrable.

OFFICE LOCATIONS

25 E HICKPOCHEE AVE
LABELLE FL 33935
863-675-5270

1100 OLYMPIA ST
CLEWISTON FL 33440
863-983-3178

OFFICE HOURS
8AM - 5 PM
WWW.HENDRYPROP.COM

Old Florida isn't gone It's rooted in the heart of LaBelle

By Kelly Boone

Executive Director, LaBelle Downtown Revitalization Corporation



Old Florida is not gone, it is rooted in the heart of Southwest Florida in beautiful LaBelle. Explore our Downtown LaBelle nestled along the Caloosahatchee River famous for our soirees. Called the City Under the Oaks for a reason, find some shade under one of our celebrated oak trees while relishing in our small town charm. Visitors to Downtown LaBelle will fall in love with its unique charm, one-of-a-kind shops, and Southern hospitality. The LaBelle Downtown Revitalization Corporation (LDRC) is a group of volunteers who have an interest in improving the appearance and economic stability of historic Downtown LaBelle. We recognize the value that a vibrant downtown can bring to our community and the importance of protecting its historic heritage through the preservation of buildings, public space, and its place as the heart of our community. We are committed to offering our time and energy to initiate the revitalization of our downtown so that its contribution to the livelihood and growth of our residents, business owners, and community can be realized. Outdoor events and activities, such as street concerts and markets, have become a regular feature of the district Beautification projects led by LDRC have added additional lighting and seating to the district which allows visitors to enjoy their stay in the district at any time of the day.

The City of LaBelle has also invested in projects that welcome visitors, such as the City Wharf which allows boaters to dock for 3 days at no charge. The downtown district greets thousands who visit by waterway each year.

LDRC has an office located in Downtown LaBelle. Visitors are invited to stop by and read the 'Community Board' to learn



INI/Dale Conyers
The first Friday of every month from October through April, the LaBelle Downtown Revitalization Corporation hosts Downtown Live!, which features free street concerts and themed activities. Above, the band High Lonesome performs at the October "Groovy Baby" event.

LaBelle Downtown Revitalization Corporation

Located at:
8 Park Ave, LaBelle, FL 33935.
Mailing Address:
P.O. Box 1844, LaBelle, FL 33975
Phone: 863-225-2749
Email:
Downtownlabelle@gmail.com
Website:
downtownlabelle.com



INI/Dale Conyers
Even LaBelle's canine friends get in on the party theme vibe for the free street concerts and events in town.

about activities or businesses around town, shop LaBelle-themed items, and play some tunes on the free piano in the carport!



Submitted Photo/Shary Weckwerth

Come to Hendry County and see the beautiful sunrise on the Caloosahatchee River for yourself.



State Farm[®]

Providing Insurance and Financial Services
NMLS MB #110089 MLO Lic. #L01517





Joanne Jordan

Agent

Joanne Jordan Agency

100 W. Ventura Ave
Clewiston, Florida, 33440
Phone: 863-983-7410
Fax: 863-983-7075
Email: joanne.jordan.dk21@statefarm.com

Like a good neighbor, State Farm is there.[®]

est. 1923

The History of Florida's 63rd County

By Joe Thomas, president

LaBelle Heritage Museum

Hendry County, the 63rd of Florida's 67 counties, was established by the Florida legislature in May 1923 by taking approximately half of the area left to Lee County after the creation of Collier County, was named in honor of renowned Florida cattle man Francis Asbury Hendry. Hendry first came to the area as a scout for the U.S. Army during the Third Seminole War in the 1850s. He returned after the War Between the States to set up headquarters for a cattle ranch at old abandoned Fort Thompson that earned him the title of Cattle King of South Florida.

The Upper Caloosahatchee Valley became known to Americans of European heritage during the Second Seminole War (1835-1842) when supply depots were established along the pristine Caloosahatchee River and in the Everglades and Big Cypress - almost impenetrable regions to the south. They were periodically abandoned during the rainy season and also when U.S. troops were not systematically searching for Seminoles - the generic term for both Miccosukee and Cow Creek bands of Native Americans. U.S. troops sought to round up and forcibly move these Native Americans to the Trans-Mississippi West, making inland Florida safe for settlement by Americans steadily moving south from Georgia and the Carolinas into a promised

Eden. Native Americans resisted encroachments on their lands while American settlers and troops refused to admit the validity of Seminole claims to this virgin territory. Slowly but surely, American settlers moved into the Caloosahatchee Valley, lured by the promise of an area that would not only support tropical fruits and vegetables, but also their means of transportation - small supply boats plying the picturesque Caloosahatchee River taking them to market.

The Caloosahatchee River was both boon and bane to the hardy pioneers settling the Caloosahatchee Valley during the latter years of the 19th century. It was the source of irrigation for their crops as well as being their avenue to the Gulf of Mexico and northern markets. Yet, at the same time, the river's inability to quickly and successfully drain the area during Florida's unpredictable rainy season and after seasonal hurricanes caused settlers to abandon their homes, farms, and tropical groves along its banks. Requests to the Army Corps of Engineers to clear the Caloosahatchee of obstructions following the disastrous floods of 1878 only resulted in the U S Congress appropriating funds to clear the channel as far upriver as the small community of Fort Myers.

Shortly thereafter, hardy pioneers began carving a new settlement on the banks of the Caloosahatchee at the western

See **HISTORY** — Page 18



INI/Dale Conyers

The Capt. Francis A. Hendry House is a historic site in LaBelle. It is located at 512 Fraser St. On Feb. 5, 1998, it was added to the U.S. National Register of Historic Places. The frame vernacular house was built for Captain Francis Hendry, LaBelle's founder and county namesake. It is the only surviving building associated with Capt. Hendry in the county.

Hendry County Sheriff's Office

Serving and Protecting



*In God
We Trust*

*Sheriff :
Steve Whidden*



Main Office

101 South Bridge Street
Labelle, Florida 33935
863-674-5600



Clewiston Office

100 East El Paso Avenue
Clewiston, Florida 33440
863-805-5000

HISTORY

Continued From Page 16

settlement and named it in honor of two of his six daughters, Laura Jane Hendry Thompson and Carrie Belle Hendry Evans.

It was left up to Philadelphia entrepreneur Hamilton Disston and his plans to reclaim the Everglades and construct a canal from the Gulf of Mexico to the Atlantic Ocean. Such a waterway had been dreamed of since the days of Spanish Florida — a canal that would fully connect the Caloosahatchee from its headwaters at Lake Hickpochee to Lake Okeechobee via the Three Mile Canal. Small paddle wheel steamers plied the Upper Caloosahatchee from the early 1880s until Caloosahatchee Irrigation and Navigation Locks 2 and 3 were dynamited to help release flood waters from the disastrous 1928 Okeechobee Hurricane. Dynamiting these locks did not achieve the desired result but did result in destroying the Caloosahatchee itself as the primary avenue for transportation and commerce between Fort Myers and the Upper Caloosahatchee Valley.

Vegetable farms, citrus groves, and tropical fruit plantations dominated the area closest to the Caloosahatchee during this period of early settlement in the Caloosahatchee Valley. Cattle ranching was paramount in the lush grasslands that bordered the Caloosahatchee. However, the area south of the Caloosahatchee was home to large numbers of furbearers such as otter, fox, bobcat, and Florida Panther whose pelts were in demand for both gentlemen and ladies' hats, winter coats,

edge of Captain F.A. Hendry's vast cattle ranch. This settlement, first known as Belle or Belle City, became LaBelle when Hendry platted the small

and lap robes. Tropical birds were hunted for their plumes and sometimes entire carcasses that adorned not only ladies' finest millinery but also elaborate hairdos during the Gilded Age. Such high demand encouraged hunting and trapping for pelts and plumes that lasted well into the 20th century until changing fashions, wildlife conversation, and strict laws about poaching called an end to wide-spread trapping and fur trading on the streets of LaBelle.

The majority of the early American settlers in the Caloosahatchee Valley came south from North Florida, Georgia, and the Carolinas in search of open frontiers just as many of their neighbors moved west into virgin lands in Alabama, Mississippi, Arkansas, Northern Louisiana, Texas, and the Great Plains. However, Midwestern land developers such as E.E. Goodno and - in some instances - land speculators like Rev. George F. Hall from the Midwest concentrated on luring yeoman farmers and artisans from Illinois, Missouri, Kansas, and Oklahoma.

Clewiston had its Japanese settlers in the years prior to World War II, and LaBelle boasted Polish, Czech, and Italian families becoming steadfast members of the community during the early years of the 20th century as well as a short-lived return to the land by Eastern European Jewish immigrants from the Shtetls of the Russian Empire in the early 1930's.

The Seminole Indians had been forced into the Big Cypress during both the Second and Third Seminole Wars from the mid- 1830s to the late 1850s. A reservation was set up in the southeastern corner of Hendry County, and the Native Americans were conveniently forgotten (for the most part)



Courtesy photo

The Harold P. Curtis Honey building in downtown LaBelle has become a Hendry County landmark.

except for visits into Clewiston and LaBelle to trade their furs and buy groceries.

The Seminoles were cattle ranchers in North Florida before the United States obtained Florida from Spain by treaty and purchase in 1819 and continued to herd some cattle even after they were forced into the Big Cypress. The plight of these Native Americans followed that of their cousins in other areas until entrepreneurs in the tribe decided to adopt the ways of their neighbors and became successful international businessmen with enterprises spanning the globe.

The possibility of raising sugar cane in the Upper Caloosahatchee Valley had been recognized as early as the 1870s. The possibility became a reality with the push for Everglades Drainage and Reclamation during the early years of the 20th century. It led to the establishment of Clewiston on the shores of Lake Okeechobee in the early 1920s, a community that would thrive off of the new sugar mill, United States Sugar Corporation. It had holdings in the rich muck lands of Lakes Okeechobee and Hickpochee, as well as the Upper Caloosahatchee Valley. The Caloosahatchee, Lake Okeechobee, and the prime hunting lands in the area coupled with generally mild winter and spring weather, beckoned wealthy sportsmen from the North. Winter vacation homes began to spring up along the banks of the Caloosahatchee and on the Ridge in Clewiston. Many of these tourists became very active in their winter vacation communities, and some even became permanent residents.

The economy of Hendry County has been a mixture of agriculture, hunting and fur trading, and tourism since its early days. Who knows what the future has in store for our diverse population with its varied interests?



INI/Staff photographer

The Clewiston Inn is located on U.S. 27 and is the oldest hotel in the area of Lake Okeechobee. The building survived the great 1926 and 1928 hurricanes but was destroyed by a fire in 1937, and then the classical revival style structure was rebuilt in 1938.



Harold P. Curtis Honey Co.

FOUR KINDS OF HONEY

Come in and taste before you buy!

- Orange Blossom • Wild Flower
- Seagrape • Mangrove

355 N. Bridge St. • LaBelle, FL 33935 • 863.675.2187

curtishoney.com

We Also Offer

- Beeswax Candles • Gift Baskets • Honey Candies
 - Jellies & Marmalades
- Soaps - All natural with essential oils made with our local honey

'Sweetest Town'

Welcomes Visitors and Growth

By Randy Martin

Clewiston City manager

"America's Sweetest Town" is the City of Clewiston, Florida. Positioned on the southwest boundary of Lake Okeechobee, the second largest natural freshwater lake entirely contained within the continental United States, Clewiston is the gateway to "Lake O" as it is affectionately known in the area. Clewiston is centrally located between the shores of the Atlantic Ocean to the east and the waters of the Gulf of Mexico to the west.

The "Sweetest Town" label grew out of the abundant sugarcane agricultural interests in the vicinity and the city's proud claim as home to the corporate headquarters of the United States Sugar Corporation. As one of the world's largest sugar producers, the area's top employer and given the company's long history of philanthropic support for the community at large, Clewiston is greatly indebted to U.S. Sugar for the plentiful contributions the company has made and continues to provide to the quality of life of this unique South Central Florida region.

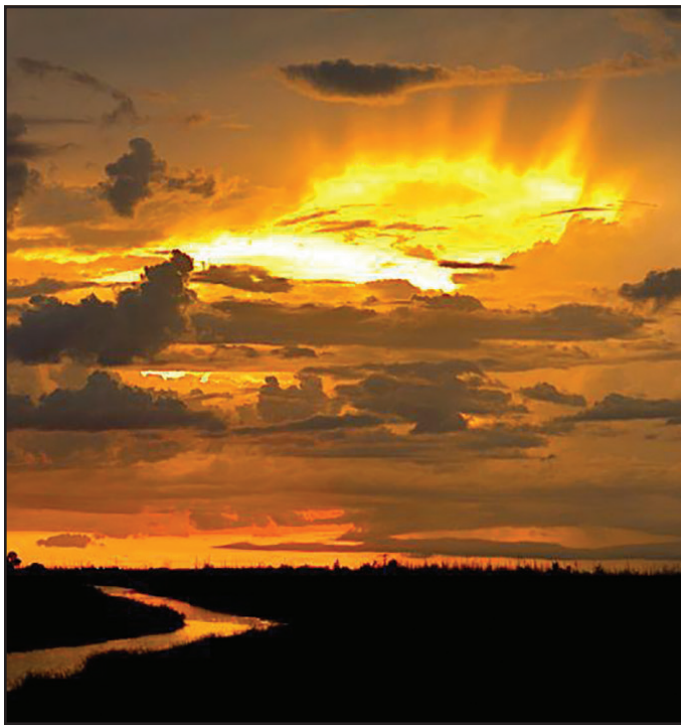
Clewiston visitors and locals alike are fortunate to be able to enjoy a natural environment with seemingly limitless outdoor recreational opportunities available in reasonably close proximity to the community. With the noted convenient access to the lake's abundant fishing and wildlife attributes and close proximity to the wide variety of amenities offered in the more urban coastal areas on both shores, Clewiston is uniquely positioned as a South Florida hub location for all. The city is home to an amazing museum, an attractive library facility and maintains numerous passive and active parks and recreational facilities, including an historic and well-groomed 18 hole public golf course and bountiful water access points featuring a boat launch and ramp facility with lake access.

The city also hosts one of the major access venues for hiking and biking enthusiasts to the Lake Okeechobee Scenic Trail (LOST) that borders the 730-square-mile lake. This hundred-mile plus paved trail sits atop the elevated Herbert Hoover Dike that encompasses the lake perimeter and is a major segment of the Florida National Scenic Trail system. Also, nearby in Hendry County are facilities of widespread interest to the birding community including the STA-5 Reservoir, which is a focal point for the Hendry-Glades Audubon Society.

Clewiston is a well-designed John Nolen community with palm tree-lined and landscaped streets and abundant open space. The city is intersected by the major U.S. 27 and State Road 80 transportation corridor, dubbed "Sugarland Highway," which handles most of the east-west traffic through central Florida south of the lake. City officials are focused on economic development initiatives to fortify and enhance existing commercial districts along the Sugarland Highway corridor, particularly efforts to revitalize the older "downtown" sections.

Clewiston is currently experiencing an uptick in interest in its Park of Commerce with available development sites for small and medium light industrial type uses. The city is also experiencing significantly enhanced interest in residential and commercial growth in and around the community.

This heightened interest is welcomed by Clewiston and has helped to promote the development of a strong partnership between the city and its municipal partner Hendry County to



Courtesy photo/Waddy Thompson

The Clewiston levee is a great place to capture sunsets.

plan and expand access to necessary utility infrastructure that will support larger scale industrial and commercial development particularly along the corridor west of the city. This effort is in great part positively influenced by the planned Airglades International Airport project. With recent FAA concurrence for the sale of the public county-owned airport for private development, the initial phases will consist of a major cargo and freight handling facility on the site with construction expected to commence in 2021.

Despite the city's focus on economic development to generate a climate conducive for business investment and job creation in the Clewiston/Hendry County area, the city is equally committed to maintaining its highly valued small-town atmosphere. Clewiston is blessed with a wonderful citizenry and a deeply committed group of city commissioners. The city also boasts an active faith-based community, a strong group of civic organizations and a diverse and eclectic commercial base of small businesses, many of which are locally owned.

As city manager, I am also honored to lead a dedicated team of qualified and capable professional staff, driven toward the goal of providing the highest caliber public services in the most cost-effective manner possible.

Whether you are a potential year-round resident, second home owner, real estate investor, business or service provider, or a visitor looking for a change-of-pace vacation or interesting day trip experience, I encourage you to further consider Clewiston.

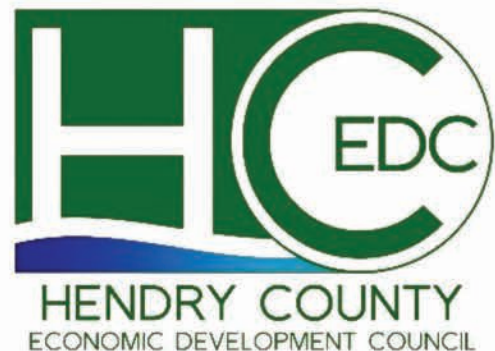
GROW YOUR BUSINESS IN

Hendry County



DISCOVER OUR FAVORABLE BUSINESS CLIMATE, WILLING WORKFORCE, LOW COST OF OF DOING BUSINESS, CONVENIENT LOCATION AND OUTSTANDING QUALITY OF LIFE.

- Abundance of large tracts of land
- No impact fees
- Expanding road networks
- The future operation of an international cargo hub airport
- Opportunity to expand for a fraction of the cost
- Offering certifications and apprenticeships in skilled trades
- Centrally located between coasts



WWW.HENDRYEDC.COM | 863-675-6007

A College Education Close to Home

Florida SouthWestern State College

By Jennifer R. Young

Florida SouthWestern State College Media Coordinator

Florida SouthWestern State College (FSW) is Southwest Florida's largest and most affordable institution of higher education. Annually serving nearly 22,000 students at five locations and online, FSW offers more than 45 academic programs with two- and four-year degrees and professional certifications, several with 100 percent licensure pass and job placements rates. FSW's tuition is the lowest in Southwest Florida, and with scholarships and financial aid, 70% of FSW students graduate debt free.

At FSW, students quickly discover that our faculty members bring world-class experience and a deep knowledge base to the classroom. Our course offerings prepare students to further their education or start their dream career with experiences that stretch far beyond the classroom. Honors courses, internships and undergraduate research opportunities are available, and FSW students can even study abroad in Italy at the Lorenzo de' Medici Institute. Many others have traveled abroad to experience learning in countries including Russia, Nicaragua, and the Galapagos Islands.

As a member of the Florida College System, FSW offers its students the benefits of articulation agreements established by the Florida Department of Education. Students graduating from FSW with an Associate in Arts (AA) degree are guaranteed by the state of Florida to "have the opportunity to earn a bachelor's degree at a state university or Florida college offering four-year degrees." Additionally, Destination FGCU, the FSW/FGCU Transfer Program, provides students with the tools and guidance

they need to easily and successfully move from FSW upon completion of their Associate in Arts degree (AA) to Florida Gulf Coast University.

FSW's collegiate high schools, located on the Lee and Charlotte campuses; FSW's Collegiate Institute at Clewiston High School; and our dual enrollment program provide Southwest Florida high school students the opportunity to accelerate their learning and earn an AA degree while they are still in high school.

FSW students have many ways to stay engaged on campus. Student clubs and activities, intramural sports, and a state-of-the-art fitness center provide opportunities for students to be socially and physically active.

FSW is also known for its dedication to the arts with the Barbara B. Mann Performing Arts Hall, the Bob Rauschenberg Gallery at FSW, and the Rush Collections Gallery all located on the Lee Campus in Fort Myers. The Barbara B. Mann Performing Arts Hall hosts performances throughout the year. Additionally, the Bob Rauschenberg Gallery at FSW hosts numerous art exhibitions featuring artists of modern and contemporary art in all mediums. Within our Richard H. Rush Library, visitors can view the Rush Collections Gallery on the ground floor.

In the fall of 2016, the Suncoast Credit Union Arena opened as the home to the FSW's men's and women's basketball teams and the women's volleyball team. Additionally, the arena hosts a variety of concerts, graduations, tournaments, and community events. The community can also catch an FSW Bucs baseball or softball game at City of Palms Park in Fort Myers.

To learn more about FSW, visit www.FSW.edu.



INI/Dale Conyers

The FSW's Hendry Glades Center offers Hendry County students a chance to achieve an higher education while staying close to home.



Hometown Healthcare

Providing personalized care in your own backyard

Hendry Regional Medical Center (HRMC) is a 25-bed critical access hospital delivering a personal touch through doctors and nurses whom you know and trust, in a warm and friendly environment.

Hendry Regional provides healthcare to the residents of Hendry County, Southern Glades County and Western Palm Beach County. HRMC strives to meet the needs of the residents by incorporating modern technology with compassionate and competent medical staff to care for its patients. Convenient locations are available in Clewiston and LaBelle.

Hendry Regional Medical Center offers a modern emergency department, along with imaging services, surgery suites, laboratory services, and outpatient services.

HRMC also has 6 additional facilities located throughout Hendry County. In Clewiston the Dr. James D. Forbes Family Care Center

hosts a dynamic team providing Family Medicine, Pediatrics, and Internal Medicine. Corporate Health Services offers preventative health programs for employers and their employees including worker's compensation management, testing, screenings, site assessment's, and wellness education. Hendry Regional Rehabilitative Services offers a variety of rehabilitation and therapeutic services designed to evaluate and treat problems affecting mobility and function.

The Hendry Regional Convenient Care Center is located in the heart of LaBelle. The facility includes Family Medicine, Pediatrics, and specialty care including gynecology, surgery, and physical and occupational therapy services.

Hendry Regional Medical Center offers a wide array of specialty services for residents including cardiology, surgery, gynecology, and audiology.

Understanding the need of the community HRMC continues to add services and providers to its already expansive list. The most recent additions have been 3D Mammography, Infusion Services and additional Family Practice Providers. With the continued growth of services and providers HRMC built a new Medical & Rehabilitative Services building.

The new building provides additional space for rehabilitative services and dedicated medical space for future growth.

At HRMC healthcare is a team effort. The staff is courteous, respectful, and enthusiastic in serving healthcare needs at any of the multiple locations. Hendry Regional has proudly been providing healthcare for over six decades, with roots that run deep within the community!



**HENDRY REGIONAL
MEDICAL CENTER**

"Where It's All About Getting Better"

**524 West Sagamore Avenue
Clewiston, Florida 33440
863.902.3000**



Dining Guide

Hendry County is a dining destination! Visitors to the area come from near and far for award-winning barbecue, to enjoy a meal on the banks of Lake Okeechobee or to experience our unique locally owned eateries!

CLEWISTON

Beef 'O' Brady's
892 W Sugarland Hwy.

Big Eaters Café
110 W Ventura Ave.

Burger King
1014 W Sugarland Hwy.

Café Tropical
307 E Sugarland Hwy.

China Taste Buffet
930 W Sugarland Hwy.

Domino's Pizza
503 E Sugarland Hwy.

Dunkin' Donuts
100 S Berner Rd.

Hawaiian Ice
444 W Sugarland Hwy.

Gator Bait Pub & Gril
13983 FL-90

Jalapeños Taqueria
444 E Sugarland Ave.

Jalapeños Taqueria #2
728 US-27

KFC
411 W Sugarland Hwy.

Little Caesars Pizza
880 W Sugarland Hwy.

Main Street Subs
344 E Sugarland Hwy.



McDonald's
905 W Sugarland Hwy.
863-983-9521 • Mcdonalds.com
Stop in at any time at your hometown
McDonald's, known for its burgers, fries
& shakes.

Pizza Hut
921 W Sugarland Hwy.

Popeyes Louisiana Kitchen
504 E Sugarland Hwy.

Roland Martin Marina & Resort
920 E Del Monte Ave.

Scotty's Tiki Bar
920 E Del Monte Ave.

Sonny's BBQ
1030 W Sugarland Hwy.

Subway
1005 W Sugarland Hwy.

Subway
940 W Sugarland Hwy.

Sunrise Restaurant
842 E Sugarland Hwy.

Thomas Diner
1019 Harlem Academy Ave.

Wendy's
800 W Sugarland Hwy.

LABELLE

7 Mares
415 S Main St.

Abbies Deli LLC
4060 NE Eucalyptus Blvd.

Amigos & Beer
675 W Hickpochee Ave.

Beef 'O'Brady's
21 S Lee St.

Big V Restaurant
32 Hall St.

Bridge Street Coffee
23 Fort Thompson Ave.

Buckingham Farms
670 W. Hickpochee Ave.

Burger King
61 S. Hall St.

Cactus Mex
512 Cowboy Way

China Uno
90 W. Hickpochee Ave.

Chinese Fortune Cookie Restaurant
505 W. Hickpochee Ave #1000

Contreras Mexican Restaurant
125 FL-80

Domino's Pizza Store 5085
870 W. Hickpochee Ave.

Dunkin' Donuts
31 S Lee St.

El Gran Taco Loco
863 W Cowboy Way

Forrey Grill
280 Bridge St.

Hungry Howie's Pizza
180 S Main St.

KFC
50 N Lee St.

LaBelle Brewing Company
670 W Hickpochee Ave.

La Victoria Paeteria Ice
Cream Shop & Restaurant
155 W Cowboy Way

Log Cabin BBQ
480 W Hickpochee Ave.

Little Caesar's Pizza
75 Bridge St.



McDonald's
21 W. Hickpochee Ave.
863-675-0499 • Mcdonalds.com
Stop in at any time at your hometown
McDonald's, known for its burgers, fries
& shakes.

Pelican's SnoBalls of LaBelle
55 Yeomans Ave.

Pizza Hut
505 W Hickpochee Ave.

Popeyes Louisiana Kitchen
576 W Hickpochee Ave.

Sal-Cal Pizza
732 S. Main St.

Short Cakes
311 E. Cowboy Way

Subway
139 E. Hickpochee Ave.

Taco Bell
50 N Lee St.

Two Peas Café
870 W Hickpochee Ave. #500

The Quart House
100 S. Main St.



Nisbet Enterprises, Inc.
863.612.0333
LaBelle • Clewiston • Belle Glade
Indiantown • Lake Placid • Fort Myers

SouthCentralFloridaLife.com

Your community newspaper's official home on the web

Your local news source between the coasts!

Want more local news seven days a week?

South Central Florida Life offers national and state news as well as local news from Okeechobee, Hendry, Glades, Palm Beach, Martin and Collier counties!

While the print editions are weekly, the website is **updated daily!**

Want the headlines brought straight to your email inbox seven days a week?

Go online to southcentralfloridalife.com/enewsletter to sign up for the free e-newsletter!

Weekly in Print: **Lake Okeechobee News** **Caloosa & Belle**

Hendry Tobacco~Free Partnership



WHO WE ARE

The mission of the Hendry Tobacco Free Partnership (HTFP) is to involve youth and adults in community prevention and control activities. We also strive to reduce the exposure to tobacco and protect all community members from the persistent influence of the tobacco industry.

WHAT WE DO

Hendry Tobacco Free Partnership prides itself on protecting Hendry County residents from the negative implications of tobacco use and exposure. Tobacco remains the leading cause of preventable death in the United States, making the work of impactful community organizations, such as HTFP, more valuable.

JOIN TODAY

Hendry Tobacco Free Partnership is always looking for new members of the community to join the partnership in being a part of the local initiatives taking place. We believe that community collaboration is key to solving tobacco related issues in Hendry County.

Sign up today to be part of our impactful partnership!



**CONTACT US TODAY AT 863-302-6050 TO JOIN
OR VISIT US AT [FACEBOOK.COM/HENDRYTFP](https://www.facebook.com/HENDRYTFP)**

Festivals and Celebrations in the Area

Events for the whole family

EVERGLADES BOOGIE

Held at the end of January, this event gives skydivers the opportunity to jump out of all kinds of aircraft, like a De Havilland Otter, a Sky Van, a King Air and a helicopter. Nightly entertainment, bonfires, raffles, vendors and food. You can reach them at 800-533-6151 or 863-983-6151 or visit their website at skydivespaceland.com.

BIG CYPRESS SHOOTOUT

This event, held in March, includes a historically accurate Seminole War re-enactment, cultural displays, Seminole food, music and more at the Big Cypress Reservation. You can reach them at 1-800-949-6101 ext. 12125. Visit their website at bcshoot.com.



FLW SERIES FISHING TOURNAMENTS

These national events often take place on beautiful Lake Okeechobee. Professional anglers come from across the country to compete for cash prizes. The event is held at the Roland Martin Marina & Resort in Clewiston. The season usually kicks off in January. For more information, visit flwoutdoors.com.

BLACK GOLD JUBILEE

Celebrating the end of harvest season, this unique festival held every April, shows off Belle Glade's agricultural roots and organic "black gold" soil. Food, entertainment, fireworks, a car show, a volleyball tournament, rides and more. For more information, call 561-996-2745.



SOUR ORANGE FESTIVAL

Held in Lakeport the second Saturday in February, this event features the Sour Orange local Bake-Off, boasting delicious sour orange pies; vendors; entertainment; arts and crafts; a quilt show; recipe contests; and a photography display. For more information, call 863-233-3014.

SWAMP CABBAGE FESTIVAL

The Swamp Cabbage Festival celebrates local heroes with fun activities beginning with the Old Timers Dance and continuing with the Swamp Stomp, the Adult Country Western Dance, the Ranch Rodeo, the Legends of the Road Show, the Miss Swamp Cabbage Pageant, a fishing tournament, parade, food, arts and crafts, armadillo races and more. The festival is held every year in late February in LaBelle. You can visit their website at swampcabbagefestival.org.



CLEWISTON SUGAR FESTIVAL

Country music concert, arts and crafts,



farming, beauty pageants, dessert contest, farming exhibits, fishing tournament, car show and more. Held each year in mid-April at Clewiston's Sugar Festival Park. You can visit their Facebook page at facebook.com/SugarFestival.

BROWN SUGAR FESTIVAL

Held in Harlem, just southwest of Clewiston on the first Saturday of May, this festival has arts and crafts, a pageant, music, games, exhibits and food. Funds raised during the festival help send local students to college. For more information, call 863-902-3322.



BRIGHTON SEMINOLE FESTIVAL

The festival grounds are next to the Fred Smith Rodeo Arena off State Road 721 in Glades County. This event, held in February, showcases Seminole and other Native American arts, crafts, food, dances and traditions. They also have a rodeo and XTreme Bull Riding. You can reach them at 863-467-6039. You can visit their website at REZRODEO.com.

CHALO NITKA FESTIVAL

Chalo Nitka is held on the first weekend in March in Moore Haven. Chalo Nitka is one of the state's oldest continuing festivals. The festival grounds are located in Chalo Nitka Park. There are midway games, rides, a pancake breakfast and vendor booths selling food, crafts and jewelry. Events also include the Big Bass Tournament, the Frontier Days Rodeo, the Kid's Day and Small Fry Fishing Contest, the Chalo Nitka Parade and the Chalo Nitka Queen Pageant. For more information, visit their website at chalonitka.com or call 863-946-0300.



HENDRY COUNTY FAIR AND LIVESTOCK SHOW

Celebrating local agriculture with a livestock show and sale, cake auction, petting zoo, exhibits, pageants, a parade, frog racing and more, this week-long event is held in Clewiston every February. You can visit their website at hendrycountyfair.com.

LIVESTOCK SHOW ARENA

Home to the "Raising Cane Rodeo," this site has events for youth development and adult recreation. Enjoy sanctioned barrel events and weekly roping throughout the year. They are located at 610 E. El Paso in Clewiston. You can visit their website at hendrycountyfair.com.





AMERICAN INDIAN ARTS CELEBRATION

Dance! Music! Arts! Culture! The first weekend in November, the Ah-Tah-Thi-Ki Museum hosts its annual American Indian Arts Celebration on the museum grounds at the Big Cypress Seminole Indian Reservation. Enjoy traditional and contemporary arts and crafts, dance and music of the Seminole, Southeastern and other Indian tribes from across the country. Along with the Native American vendors, special presentations and wildlife shows, admission to the festival includes free parking and entrance to our award-winning, American Alliance of Museums accredited museum. Visit ahtathiki.com or call 863-902-1113 for more information.

RECREATION RODEO GROUNDS

Home to the annual Swamp Cabbage Festival and newly established Cattleman's Ranch Rodeo, this facility hosts multiple

practice and sanctioned events throughout the year and is the site of the annual livestock sale.

CLEWISTON KIDS FALL FESTIVAL

It features games, food, costume and pet costume contests, local vendors, a car

show and more on the Saturday before Halloween. For more information, call 863-983-1492.

RV GAMES

Presented by LDRC and Oakgrove RV Resort, LaBelle Woods RV Resort, Grandma's Grove RV Resort, Whisper Creek RV Resort, Riverbend RV Resort, Country Village and The Glades RV Resort hold an annual RV GAMES competition in Downtown Labelle in January. For more info visit their website at downtownlabelle.com.

DOWNTOWN LIVE!

Free street concerts on Fort Thompson Avenue from 6-9 PM on the first Friday of each month from October to April. Find out more on the LDRC event page: downtownlabelle.com

SHOP DOWNTOWN OUTDOOR

Saturday Market Held on the First Saturday of the month from November through March from 9am to 2pm locates at 8 Park Avenue, Downtown LaBelle Vendor booths, entertainment and interactive art classes! Find out more on the LDRC event page: downtownlabelle.com



• Park Models for Sale!

- Rental Lots - The Glenn, a resort within a resort. 68 Rental Super Sites each a minimum of 50' x 60' wide lots with 50-amp service, telephone, cable TV, and Internet. You will have access to a fully equipped 5,000-sq. ft. clubhouse and a 1,800-sq. ft recreation center which are just two of the many amenities you will enjoy, combined with our heated swimming pool, large screened pavilion, shuffleboard courts, horseshoe pits, exercise and billiards rooms, scheduled on-site activities and community outings.

Call us soon! 863-617-7349

Whispercreekrvresort.com

Taking History into the Future

Clewiston Museum

By Jason Sims

Director, Clewiston Museum

Welcome to Hendry County from a person who's new here, yet not so new, himself. I am the new director of the Clewiston Museum, and I am blessed to be an eighth generation Floridian. My connection to the area goes back multiple generations within my family. My great-great grandmother first came to the Glades from Tampa in the late 1910s, purchasing land in Moore Haven during the land boom.

During that time, mosquitoes came as thick as fog and she was unwilling to cope with the pests, so she and her husband thought it best to relocate back to Tampa. Fast forward two generations, and my grandfather (Gene Wilson) was assigned to supervise the railroad in Clewiston, so in the early 1950s, he, his wife (Joan Wilson) and my mother (Susan Sims) moved to America's Sweetest Town.

While living in Clewiston, Gene and Joan's family grew to four children, all of whom graduated from Clewiston High School. Upon my mother's graduation, she enrolled in college at Palm Beach Atlantic in West Palm Beach where she met and married my father, Dennis Sims.

I grew up in West Palm and would come to Clewiston for every holiday, over summer vacations, as well as the occasional weekend. I always enjoyed my time in the Glades and learned a lot about cattle, citrus, sugarcane, hunting, fishing and the history of the area. That love for history and the area blossomed as I grew older. Upon graduating high school from Dreyfoos School of the Arts in West Palm Beach, I decided to enter college as a history major.

Through tough work and dedication, I was able to graduate from Florida Atlantic University with honors and a bachelor's degree in public history. As an undergraduate I honed my craft by accepting internships at museums and historical societies throughout South Florida. Through this time, I also was exposed to and participated in oral history projects and received a federal license to do so. This background in both education

and local knowledge allotted me the opportunity to accept the director's position at the Clewiston Museum when the opportunity presented itself.

New ideas

Upon accepting the job at the Clewiston Museum, I knew I had big shoes to fill with the retirement of Butch Wilson. His student outreach programs and Florida Humanities Council Speaker Series are extremely valued and loved within the Glades. I accepted these commitments with excitement, and they are continuing to enrich the community.

The Clewiston Museum in the past month alone has been gifted a grant from both the Batchelor Foundation and the Florida Humanities Council to continue these programs. In addition to continuing these valued projects, in October I was privileged to open the Sue Corbin and Louis Sullivan Glades Art Gallery within the museum. This gallery is specific to Glades artists and showcases their talent. In addition to this accomplishment, the museum is also in the process of updating our website to be more user-friendly as well as in corporate social media and other interactive platforms for research and to allow the community to be more engaged with the museum.

The Clewiston Museum is also in the process of incorporating school-aged children to attend and be a part of museum activities. One example of this was during the museum's annual art show, where we for the first time ever



Crowds gather for the opening of the Southern Sugar Company's new mill in Clewiston. (Image courtesy of State Archives of Florida)

The American Legion Post 130

Thanks Our Veterans

Happy Hour Monday - Friday
11 a.m.-1:00 p.m. + 4:00-6:00 p.m.
Lounge Opens 10 a.m. Daily

American Legion Post 130
is located at
699 SR80 West,
across from the
Shell station in LaBelle.
For further information
call
863-675-8300.

Our dining room is smoke free
and the Public is Welcome.

encouraged art students from Clewiston High School to participate. They did so, and some of them had the privilege of selling their own artwork for the first time.

The museum is also starting a relationship with SouthWestern Florida State College. The goal of this project is to allow dual enrollment students in Clewiston the opportunity to pick a local historical event, time or person, and research it with the help of the museum's archives and facilities, then present it to community members. Another project the Clewiston museum is focusing on is oral histories from local residents. Through this project we hope to catalog and archive the history of Clewiston by those who lived it, in their own words, and preserve the data for future generations. The museum is also updating some exhibits for the enjoyment of patrons. Those exhibits include our Riddle Field Royal Air Force exhibit and our Lake Okeechobee Fishing exhibit.

The museum also has a wonderful archive of photos from the area dating back to the 1910s. These photos are being categorized by subject and date, the result of which will be pictorial history events within the museum in the coming year. The museum is also reaching out to organizations such as the Rotary Club to connect and share ideas and assets to bring the community together.

While the programs I have mentioned are free to the public, none of these great things will happen without the community's help. The Clewiston Museum is a not-for-profit organization. We encourage all local residents to come and participate. We also encourage everyone to become a member of the museum. Membership is easy: Just fill out a membership form and donate as little as \$25, and you, too, can become a valuable part of the exciting things the museum can offer the community.

Clewiston Museum

109 Central Ave, Clewiston, FL 33440

HOURS: Monday- Friday 9AM-4PM

Saturday and Sunday Closed

Phone: (863) 677-9137



Courtesy photo/Clewiston Museum

Before the former RAF pilot training ground became Airglades airport, it was Riddle Field during World War II.

We are here for you!



- **Eye Exams**
- **Glasses and Contacts**
- **Retina Care**
- **Dry Eye Treatment**
- **Cataract Care**
- **Glaucoma Treatment**
- **Diabetic Eye Care**

Specialty Vision Care has remained open during this pandemic to serve you. We have CDC protocols in place to protect our patients and staff. Call us for all of your eye care needs. We have specialists who provide care in the Belle Glade office so most of your needs can be met on site without having to be referred out to a non-local specialist.

SPECIALTY VISION CARE



Heather B. Seith, MD • Nicole A Tyrrell, OD

**1200 S. Main St, Suite 103
Belle Glade, FL 33430
(561) 226-4922**

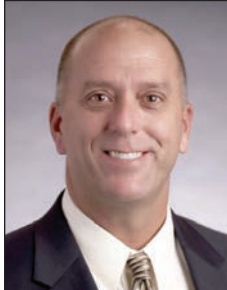
Students First

Hendry County welcomes new Superintendent

By Michael Swindle,
Superintendent of Hendry County Schools

I am honored and excited to be leading Hendry County Schools. Hendry County is blessed with beautiful natural scenery, rich agriculture history and diverse cultures. From Lake Okeechobee, the Caloosahatchee River, multiple state forests and beautiful farm land makes Hendry County a great place to work, live and play!

My goals for Hendry County Schools are pretty simple. We will strive to be a high achieving school district. We will provide safe, orderly and inviting schools where students can take full advantage of their capacity to learn. We will create an educational culture where teachers grow and use their wisdom to benefit our students. We will focus on increasing student achievement and opportunities in every school.



Hendry County Schools are home to some of the best Career and Technical Educational programs available. Our students have a variety of opportunities to learn skills and earn industry certifications that lead to rewarding careers. We also have a wide variety of athletic opportunities that promotes physical fitness and competitions that instills ethics and the dignity of hard work. Additionally, we have many other clubs that promote leadership and citizenship where students make a positive difference in our schools and our community. Our focus on driving up academic achievement coupled with multiple educational opportunities will ensure our students are college and career ready!

Hendry County Schools enjoys a close relationship with the community, businesses, families, and volunteers. Working together, we understand the importance of helping our students develop essential skills so that their full potential can be realized.

As Superintendent, I will always maintain an open door policy. Please feel free to contact me anytime at 863-674-4642

Clewiston

Clewiston Youth Academy

Principal Martin Espinoza
475 E. Osceola Ave.
863-902-4216 or 983-1577

Clewiston High School

Principal Phillip Summers
1501 S. Francisco Street
863-983-1520

Clewiston Middle School

Principal Tina Kelley
601 W. Pasadena Avenue
863-983-1530

New Harvest Academy

Principal Jesse Windham
370 Holiday Isle Blvd.
863-805-0485

Clewiston Adult School

Principal Kevin Lutkenhaus
475 E. Osceola Ave.
863-983-1511

Central Elementary

Principal Melissa Carter
1000 S. Deane Duff Avenue
863-983-1550 or 983-1551

Eastside Elementary

Principal TBA
201 W. Arroyo Avenue
863-983-1560 or 983-1561

Westside Elementary

Principal Sarah Sanchez
205 W. Arroyo Avenue
863-983-1570 or 983-1571

Clewiston Christian School

Principal George Duckstein
601 Caribbean Ave.
863-983-5388

LaBelle

LaBelle High School

Principal Tammy Bass
4050 Cowboy Way
863-674-4120 or 674-4121

LaBelle Middle School

Principal John Klinger
8000 E. Cowboy Way
863-674-4646 or 674-4647

Country Oaks Elementary

Principal Robin Jones
2052 Eucalyptus Drive NW
863-674-4140 or 674-4141

LaBelle Elementary

Principal Ansley Cockram
150 W. Cowboy Way
863-674-4150 or 674-4151

Upthegrove Elementary

Principal Karra Rivas
280 N. Main Street
863-612-0750 or 612-0751

LaBelle Adult School

Principal Kevin Lutkenhaus
4050 Cowboy Way
863-983-1511

LaBelle Youth Development Academy

Adm. Shawna Prope
1100 Forestry Division Rd.
863-674-4590

Montura Early Learning Center

Pre-K
225 N. Hacienda
Clewiston, FL 33440

**For more information on any of the schools listed here please visit the
Hendry County School District website at www.hendry-schools.org.**

District Office: 863-674-4642

Clewiston Sub-Office: 863-902-4244

H.E.R.E. (Home Educators Reaching for Excellence) of Hendry County

Home Support Group for Homeschoolers
Contact person: Melanie Rudd 863-228-7840

To register: Hendry County School District/Home Education Program Office
475 E. Osceola Ave, Clewiston

The Hendry County School Board



Dwayne E. Brown
District 1



Paul Samerdyke
District 2



Amanda Nelson
Vice Chairman
District 3



Stephanie Busin
Chairman
District 4



Jon Basquin
District 5

| | | | | |
|--|--|--|--|---|
| Dwayne E. Brown P.O. Box 684 Clewiston, Florida 33440 Term expires 11/18/2024 Email - district1@hendry-schools.net | Paul Samerdyke 653 Caloasa Estates LaBelle, Florida 33935 Term expires 11/18/2024 Email - district2@hendry-schools.net | Amanda Nelson Post Office Box 337 Felda, FL 33930 Term expires 11/21/2022 Email - district3@hendry-schools.net | Stephanie Busin Term expires 11/21/2022 Email - district4@hendry-schools.net | Jon Basquin 139 Oak Drive Clewiston, Florida 33440 Term expires 11/21/2022 Email - district5@hendry-schools.net |
|--|--|--|--|---|



Compliments of
**Family Eye
Care**
Drs. Parrish &
Youmans

Your Vision is Our Focus!

Full Service
Optical Onsite

After Hours
Service Available

100 N Main Street
LaBelle, Florida (863) 675-0761
familyeyecarelabelle.com
info@feclabelle.com

Parks and Trails

Enjoy the Outdoors

Trails

LAKE OKEECHOBEE SCENIC TRAIL

Designated as a segment of the Florida National Scenic Trail in 1993, the Lake Okeechobee Scenic Trail (LOST) is a 115-mile hike atop the Herbert Hoover Dike. The view is extraordinary — the 35-foot elevation allows the hiker to enjoy the beauty of Lake Okeechobee, at more than 730 square miles the second largest freshwater lake in the United States. Other impressive sights are the fields of sugarcane with silvery tassels waving in the breezes, groves of orange trees, vibrant green crops growing in the black muck, and a variety of wildlife from egrets to alligators. You can even fish along the way. The LOST is open year-round for a variety of uses including hiking, biking, horseback riding, birdwatching, fishing and photography. Thirteen primitive camping sites are provided by the Corps of Engineers. For more information, log on to saj.usace.army.mil/Missions/Civil-Works/Recreation/Lake-Okeechobee-Scenic-Trail/.

CLEWISTON WALKING TOURS

The weather is perfect for taking one of four walking tours through the residential areas of Clewiston. Pick up a free map at City Hall or the Chamber of Commerce. The map provides Clewiston history and information about the homes as you pass by. All of the tours start at the historic Clewiston Inn, and depending upon the trail you chose, you may wander by historic houses, the Roland Martin Marina, or the Clewiston Museum. Along the way, you will enjoy watching the birds native to our area such as the egrets, blue herons and ibises. Take the green trail and you'll see Lake Okeechobee, the second largest lake within the United States. The view is stunning and it's a great place for waterfront picnicking. The trails range from 1 mile to 2.9 miles and are identified by different colored arrows on the sidewalks that correspond with the tour map. If you are not in the mood to walk, take a driving tour. The ride is relaxing and interesting. Whether you are walking or riding, this is the perfect way to become acquainted with "America's Sweetest Town."

BIG WATER HERITAGE TRAIL

Big Water Heritage Trail was officially opened in May 2003. It is a regional driving tour on state, county, and city streets that link historical, cultural, natural, recreational and educational points of interest in five counties surrounding Lake Okeechobee. The counties are Hendry, Glades, Okeechobee, Martin and Palm Beach. The Heritage Trail connects to the Lake Okeechobee Segment of the Florida National Scenic Trail, offering visitors and community members an array of recreational, educational and historical opportunities. Highway signs and brochures direct the motorists to points of interest where they will find informative kiosks and outdoor interpretive and recreational activities at destinations such as Florida's state parks and preserves, federal parks and reserves, and cultural points of interest.

For more information, stop by the Clewiston Chamber of Commerce, motels and other businesses and destination sites along the trail or at visitflorida.com/en-us/things-to-do/florida-fishing/big-water-heritage-trail.html.

Source: clewiston-fl.gov



Courtesy photo/City of Clewiston Parks & Recreation Department
Clewiston's City Pool is a great place to cool down.

City and County Parks

Clewiston Area

Candy Cane Park, 600 S. Olympia St.
City Pool, 113 W. Osceola Ave.
Civic Park, 162 Royal Palm Ave.
Clewiston Municipal Golf Course, 1201 San Luiz Ave.
Clewiston Recreation, 110 W. Osceola Ave.
Clewiston Youth Center, 110 W. Osceola Ave.
Hidden Park, West Sugarland Circle
Levee Park, Herbert Hoover Dike Road
Ridgewood Park, 112 Ridgewood Ave.
Saginaw Park, Saginaw Avenue
Sikes Park, 515 Valencia St.
Sugarland Park pavilion, 211 W. Osceola Ave.
Sugarland Park pavilion, West Arroyo Avenue
Sikes Park, 515 Valencia St.
Sweetest Town Playground (formerly known as Woodworks Park), 209 W. Osceola Ave.
Triangle Park, Block 174 East Esperanza Avenue
Trinidad Park, 520 E. Trinidad
W.C. "Bo" Pelham Jr. Park, 1700 Red Road
Water Spray Park, 113 W. Osceola Ave.
John Stretch Memorial Park, 47225 U.S. 27

LaBelle Area

Alton "Kid" Jones Park, 455 Withlacoochee Ave.
Barron Park, 1559 De Soto Ave.
Bob Mason Park, 497 Old Country Road 78
Davis-Pratt Park, 1287 Lillian St.
Hendry Complex, Forrey Drive
Hendry LaBelle Civic Park, 800 Jaycee Lions Drive
Hendry LaBelle Sports Park, 1101 Forestry Division Road
Joe Culliver Park, W. Lincoln Ave.
LaBelle Dog Park, 1200 Pratt Blvd.
LaBelle Nature Park, 440 Fraser Ave.
LaBelle River Park, Riverbend Drive
Main Street Roadside Park, 1040 State Road 29
Veterans Memorial Park, 26 E Hickpochee Ave.

Felda Area

Felda Park, 1100 County Road 830



Courtesy photo/Big Cypress National Preserve

A look at the swamp in the Big Cypress National Preserve.

Area national, state, regional agency parks

BIG CYPRESS NATIONAL PRESERVE

Established in 1974, Big Cypress is America's first national preserve and consists of 729,000 acres. A freshwater swamp ecosystem, it welcomes approximately 1 million visitors each year. It offers a diverse landscape where one can see cypress and mangroves, alligators and pather tracks all in one day. The Miccosukee and Seminole tribes call Big Cypress home.

Big Cypress National Preserve, Oasis Visitor Center
52105 Tamiami Trail East, Ochopee

Big Cypress Swamp Welcome Center
33000 Tamiami Trail East, Ochopee

DINNER ISLAND RANCH WILDLIFE MANAGEMENT AREA

Large acreage and mix of wetlands and uplands. On-site activities include hunting, wildlife viewing, fishing, hiking, camping, bicycling and horseback riding.

17781 County Rd 833, Clewiston



Courtesy photo

The Dinner Island Ranch Wildlife Management Area features fields of wildflowers.

The City of LaBelle

Welcomes you!



Phone: 863-675-2872

P.O. Box 458
LaBelle, Florida 33975

www.CityLaBelle.com

OKALOACOOCHEE SLOUGH STATE FOREST, FELDA

Okaloacoochee Slough State Forest covers 32,039 acres. The property was originally logged for railroad crossties, and sawmills were built for lumber production. Okaloacoochee Slough State Forest is comprised of a 13,382-acre swale that carries water through the forest from the north to the south. A wide range of recreational activities are offered such as many miles of open forest roads available for hiking, hunting, fishing and bicycling. Several "hidden" areas can be found for those who enjoy a hike

to an isolated fishing spot. The forest's wetlands provide opportunities for wildlife viewing. Hunting is a popular activity in Okaloacoochee Slough State Forest.

6265 Keri Road, Felda

ORTONA LOCKS CAMPGROUND, U.S. ARMY CORPS OF ENGINEERS

This campground sits on the Okeechobee Waterway overlooking the Ortona Locks.

State Highway 80, LaBelle

SPIRIT OF THE WILD WILDLIFE MANAGEMENT AREA

Wildlife viewing, hiking, bicycling, horseback riding and seasonal hunts. Located 12 miles south of LaBelle.

100 County Road 832, Felda

Privately owned bird, nature or wildlife parks

Bird Rookery Swamp, 1295 Shady Hollow Blvd W., Naples

Talkin' Monkeys Project, 1655 Panama Ave., Clewiston

Gatorama, 10665 N. U.S. 27, Palmdale

RV Resorts and Campgrounds

Okeechobee Landings RV Resort
420 Holiday Blvd
Clewiston

Roland Martin Marina & Resort
920 E. Del Monte Ave
Clewiston

Clewiston RV Resort
194 Co Rd 720
Clewiston

Crooked Hook RV Resort
51700 US-27 #9789
Clewiston

Big Cypress RV Resort & Campground
34950 Halls Rd
Clewiston

Oak Grove RV Resort 55+
500 S Main St LaBelle

Grandma's Grove RV Resort
2250 SR80 Fort Denaud

LaBelle Woods Resort
620 S Main St LaBelle

Moss Landing On the River 55+
900 Aqua Isles Blvd LaBelle

Whisper Creek RV Resort
1887 SR 29 LaBelle

Riverbend Motorcoach Resort
5800 W SR 80 LaBelle



Riverside Retreat
7305 County Rd 78 LaBelle

RiverLandings – Florida Luxury Motorcoach Resort
5942 SR 80W LaBelle

Ortona South
2410 Dalton Ln SW
Moore Haven

Meadowlark Shores RV Park 55+
1880 Williams Rd Moore Haven

The Glades RV Resort
1679 Indian Hills Dr Moore Haven

Moore Haven KOA
17192 US 27 Moore Haven

Okaloacoochee State Forest
6265 CR832 Felda

Palm & Pines RV Park
16225 SR29 Felda

Fish Eating Creek Outpost
7555 US Hwy 27N Palmdale

Sabel Palm RV Resort
9505 Main St NW Palmdale

To have an RV park added to this listing, please call Jennifer Klerk de Reus at (863) 225-4543 or email jfroman@newszap.com

Welcome to
Clewiston's
Lake Okeechobee
The **Best Bass Fishing**
in the World!

EAT
FISH
PLAY
SHOP
RELAX

CLEWISTON
America's Sweetest Town

Kristine Petersen, Mayor • Greg Thompson, Vice Mayor
Mali Gardner, Commissioner • Melanie McGahee, Commissioner • James Pittman, Commissioner
For more information visit us online: www.clewiston-fl.gov



City Commissioners



Courtesy photo/Bill Sikes

From left, Clewiston City Commission - Vice Mayor Greg Thompson, Commissioner James Pittman, Mayor Kristine Petersen, Commissioner Melanie McGahee and Commissioner Mali Gardner



INI/Dale Conyers

From left to right: Thomas A Smith, Clerk-Commissioner, David A. Lyons, Mayor, Julie C Wilkins, Tax Collector – Commissioner. Inserted Daniel W. Akin, Tax Assessor-Commissioner. Not pictured Bobbi Spratt, Treasurer-Commissioner.



Courtesy photo/Hendry County

From left, Hendry County Commissioner Darrell Harris, District 2; Vice Chairwoman Emma Byrd, District 1; Commissioner Karson Turner, District 5; Chairman Mitchell Wills, District 3; and Commissioner Ramon Iglesias District 4.

CONTACTING THE HENDRY COUNTY GOVERNMENT

If you need assistance or are unsure of which Hendry County department you wish to reach, please call 863-675-5220 to talk to a live person. If you would like to reach the County via email, please contact - welcome@hendryfla.net

Clerk of Court

LaBelle - 863-675-5217
Clewiston - 863-983-1586

Tax Collector

LaBelle - 863-675-5280
Clewiston - 863-983-1593

Property Appraiser

LaBelle - 863-675-5270
Clewiston - 863-983-1591

Elections Supervisor

LaBelle - 863-675-5230
Clewiston - 863-983-1592

Sheriff

LaBelle - 863-674-5600
Clewiston - 863-805-5000

State Attorney

863-674-4034

Public Defender

863-675-5263

County Administrator

863-675-5220

Office of Management and Budget

863-675-5329

County Facilities

863-675-5260

Building Code Enforcement

863-675-5245

County Probation

863-675-5340

County Engineer

863-675-5222

County Extension office

863-674-4092

County Attorney

863-675-5295

Emergency Management

863-674-5400

Emergency Medical Services

863-674-5412

G.I.S.

863-612-4725

Grants & Special Projects

863-675-5264

Information Technology

863-675-5242

Human Resources

863-675-5352

Planning & Zoning

863-675-5240

Port LaBelle Utilities

863-675-5376

Recreation

863-675-5347

Housing Program

863-675-5297

Social Services

863-675-5297

Special Districts (Recycling)

863-675-5252

Veterans Services

863-675-5250

Health Department

863-674-4041

Library Systems

863-902-3322

Airports – LaBelle & Airglades

863-675-1568

Public Information Officer

863-675-5304



**AUTO • HOME • COMMERCIAL • BOAT • RV
MOTORCYCLE • SR22 (IMMEDIATE) • WORKERS COMP**

LOW DOWN PAYMENTS • LOW MONTHLY PAYMENTS

We make sure you're always with the best company!

WE SHOP FOR YOU! Over 25 Different companies

Phone (239) 657.3614 • Fax (239) 657.6468 • Email Karen@bhins.com

711 West Main Street, Immokalee, Florida 34142

www.bhins.com • Se habla Espanol

A Unique Way of Life

Hendry County

By Jennifer Davis

Hendry County administrator

Hendry County is a quaint little place located in the interior of South Florida offering a unique way of life that is hard to find in the ever-changing blueprint of our state.

Beautiful arching oaks canopy throughout the City of LaBelle as you travel from the west coast headed east. In the same direction, the Caloosahatchee River connects to Lake Okeechobee, where the City of Clewiston is located, offering world-class angler and fishing opportunities.

Farm to table restaurants, local coffee shops, waterfront dining, and, just recently, a micro-brewery are among many opportunities to sit, relax and enjoy a great meal with family and friends. Specialty boutiques, spas and outdoor excursions offer a unique menu of services and shopping that you will only get in a special place such as this.

Agriculture being the number one economic driver fosters a beautiful environment and a breath of fresh air for those coming from the congested surrounding cities. With a population currently just over 40,000, the balance of growth and quality of life are steadily improving. Not only is our soil rich for agricultural, so is our history in Hendry County. Visit one of our museums to experience for yourself the rich culture of this area. Come by water, land, or air. The Okeechobee Waterway runs from coast to coast and comes right through the heart of our beautiful county. Come by air to one of our two airports, located in Clewiston and LaBelle. You can dock or fly and dine at many locations throughout Hendry.

Growth brings opportunities, and leaders in the community are working hard to provide the proper infrastructure requirements and other tools required to grow in a meaningful way. It is equally important to us to maintain our heritage and what makes us unique. The recipe is still in the making, but the finished product will undoubtedly be one that you will not forget.

Come visit Hendry County and see for yourself. We would love to have you.





IN THE BEGINNING

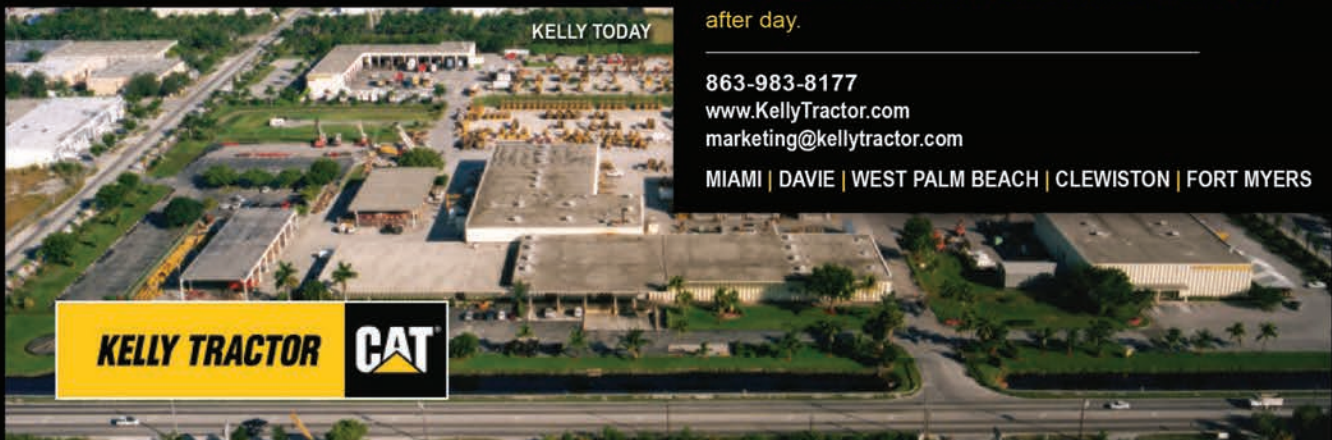
**OUR CUSTOMERS
ARE OUR FIRST PRIORITY.
EVERY DAY.**

Since 1933, Kelly Tractor Co. has been providing unsurpassed customer service. As we celebrate more than eight decades of serving the construction industry, our commitment to you is to continue providing the best equipment backed with our excellent product support. A family-owned company now in its fourth generation, Kelly remains dedicated to the basic business principles of its founder Mr. Pop Kelly: honesty, fairness and integrity.

When you purchase, lease or rent equipment from Kelly Tractor Co., you receive much more than the reliability and efficiency of a Cat machine. You receive unparalleled customer support and service, and the expertise of trained factory technicians to keep your equipment working day after day.

863-983-8177
www.KellyTractor.com
marketing@kellytractor.com

MIAMI | DAVIE | WEST PALM BEACH | CLEWISTON | FORT MYERS



KELLY TODAY

KELLY TRACTOR



COVID-19 testing and vaccinations



Local Resources:

The Florida Department of Health (FDOH) in Hendry County provides COVID-19 testing and vaccinations in Hendry County. For updates on when COVID-19 testing and COVID-19 vaccination clinics are scheduled, go online to hendry.floridahealth.gov or call the DOH office in LaBelle at 863-674-4041 or Clewiston at 863-983-1408. Testing events are periodically announced.

Additional information is available at floridahealthcovid19.gov.

Some Florida Publix pharmacies are now distribution points for the COVID-19 vaccine, and appointments fill up quickly. Please refer to the site for current residency requirements.

To make an appointment, go online to publix.com/covid-vaccine/florida. Please refer to the website for current eligibility requirements. Before booking an appointment for the COVID-19 vaccine, it's important to know current health and safety recommendations from the CDC, the Publix website advises.

Travel Information:

Please visit floridahealthcovid19.gov/travelers for all travel related information and recent advisories.

Federal Resources:

Centers for Disease Control and Prevention
cdc.gov

**Keep up-to-date with the
latest COVID-19 news and information online at
southcentralfloridalife.com/covid-19**

SouthCentralFloridaLife.com

Your Local News Source Between the Coasts!

DON'T MISS THE OPPORTUNITY TO SELL YOUR PROPERTY IN A SELLER'S MARKET

LIST YOUR LAND - Call or Text Direct 239-872-7653

| | |
|---|-------------------------|
| CHARLOTTE COUNTY 30 ACRES AT I-75 & HWY 17 | \$2,900,000 |
| FORT MYERS 4 ACRES AT COLONIAL | SOLD \$2,900,000 |
| FORT MYERS 11 ACRES AT I-75 AT BAYSHORE RD | \$1,950,000 |
| FORT LAUDERDALE 4 ACRES AT HWY 7(441) | SOLD \$1,900,000 |
| FORT MYERS 2.5 ACRES AT N. 41 AT SUPER WALMART | \$1,525,000 |
| ALVA 55 ACRES ON PALM BEACH BLVD AT COUNTY LINE | \$1,500,000 |
| FORT MYERS 5 ACRES AT N. 41 AND JUDD RD BY SUPER WALMART | \$1,325,000 |
| LABELLE 35 ACRES PALM BEACH BLVD (HWY 80) | \$990,000 |
| BUCKINGHAM 47 ACRES AG-2 BUCKINGHAM RD | SOLD \$990,000 |
| FORT MYERS 2.5 ACRES I-75 AT BAYSHORE RD (78) | \$890,000 |
| FORT MYERS 4+ ACRES 9481 BAYSHORE | CPD \$890,000 |
| FORT MYERS 35 ACRES EQUESTRIAN FACILITY & HOME | SOLD \$850,000 |
| FORT MYERS 2.3 ACRES METRO PARKWAY | SOLD \$800,000 |
| FORT MYERS 20 ACRES PALM BEACH BLVD (HWY 80) | \$598,000 |
| FORT MYERS 1.3 ACRES CPD I-75 AT BAYSHORE RD | \$595,000 |
| FORT MYERS 1.25 ACRES C1-A I-75 AT BAYSHORE RD | \$495,000 |
| BUCKINGHAM 25 ACRES AG-2 BUCKINGHAM RD | SOLD \$475,000 |
| FORT MYERS 32 ACRES AT 6780 CHIPPER LN | SOLD \$300,000 |
| PUNTA GORDA 23 ACRES 15810 HUGHS BLACK RD OFF BABCOCK RANCH RD | SOLD \$319,000 |
| ALVA 10 ACRES 20301 LANGFORD RD | SOLD \$269,000 |
| ALVA LUXURY HOME SITE 18511 TELEGRAPH CREEK LANE | \$189,000 |
| ALVA 2 ACRES 20911 HWY 80 | \$89,000 |



3 ACRE HOME IN EQUESTRIAN NEIGHBORHOOD

Pole Barn, Jacuzzi & Pool

\$479,000
Pending



3-2-2 CBS HOME

On 1/2 acre
home site.

\$289,000
Pending



4-4-4 HOME ON 30 ACRES

3 barns - 4
ponds

\$850,000
SOLD

Re/Max Hall Of Fame Sales Award • Platinum Sales Award • Re/Max Leaders & Legends Publications • Chairman Sales Award

IF YOU WANT IT SOLD • 239-872-7653

RE/MAX
REALTY TEAM
OWNER/AGENT

Darius Cochran

DariusLCochran@gmail.com

DariusCochran@aol.com

#1 RE/MAX Office in Florida 2 years in a row!

www.DariusCochran.com

Clewiston's Business Scene

Clewiston Chamber of Commerce

By Hilary Hyslope

Executive director, Clewiston Chamber of Commerce

Welcome to Hendry County! The Clewiston Chamber of Commerce invites you to discover “the liquid heart of Florida” and all that Hendry County has to offer. Situated on the southern shores of Lake Okeechobee, “America’s Sweetest Town” has a variety of businesses and amenities. Clewiston is best known for two things, our agricultural contributions and bass fishing! Here at the Chamber of Commerce, we know that our town is so much more. While we take tremendous pride in our agricultural heritage and our wonderful gem (Lake Okeechobee), it is our people and our community as a whole that has given us the title of “America’s Sweetest Town!”

Our economic climate here in Clewiston is absolutely poised for growth. Our largest employer, U.S. Sugar, boasts employment for roughly 2,500 people; other key employers include the Hendry County School District, Hendry Regional Medical Center, Walmart and a wide variety of small businesses and banking institutions. We have several exciting large projects on the horizon, including the expansion of Airglades International Airport (AIA). AIA’s location in our rural community and its proximity to U.S. 27 make it an ideal spot for an international perishable cargo hub. With spaces also available in the City of Clewiston’s Industrial Park, we are eager for the expansion that has historically shown to be moving inland in South Florida. Here in Clewiston we consider ourselves “out in the middle of EVERYWHERE.” We have many of the amenities of the larger cities but maintain the rural, small-town feel we have come to love.

The heart of our community is Lake Okeechobee. “Lake O,” as the locals call it, has fostered the careers of several bass fishing legends. Scott Martin, a Clewiston native, was awarded the 2015 FLW Angler of the Year award and was chosen to lead the USA Bass team competing in South Africa in 2017. Once you get out on Lake O, you’ll be hooked!

The services and amenities that you will find here in Clewiston are sure to meet all of your needs. Start your day with a morning walk on the Lake Okeechobee Scenic Trail (LOST). The trail sits atop the Herbert Hoover Dike surrounding the lake and built for flood protection. For this reason, the trail offers a grand vantage point to view everything from the scenic lake to agricultural landscapes. From there, swing on in to the Chamber of Commerce, where we can direct you to a number of activities including airboat tours, fishing expeditions, swamp buggy rides or farm tours. If you are looking for an educational treat, visit the Clewiston Museum or the Seminole Tribe of Florida’s Ah-Tah-Thi-Ki Museum. Looking to pamper yourself, we have a variety of local day and medical spa options. Dining here in Clewiston — well, that’s a tough choice. Breakfast, lunch or dinner, we’ve got you covered with a large variety of choices. We even have a local hangout or two for those night owls!

Whether you are relocating, starting a new business or vacationing, Clewiston is sure to be just the right fit for you! We here at the Clewiston Chamber of Commerce would love to see you stop in.



INI/Staff photographer

Tour guide Bobby Pearce hands one guest a chunk of sugarcane “gum” after he used his cane knife to remove the hard, woody husk — a good dose of fiber to start the day right, to be washed down minutes later with orange juice. Regular Raisin’ Cane Tours are operated by U.S. Sugar Corporation in cooperation with the Clewiston Museum and the Chamber of Commerce.



Courtesy photo

The Ladies for Liberty pose outside of U.S. Sugar Headquarters in Clewiston. The USO-style tour sponsored by U.S. Sugar Corporation and Lake Okeechobee News honored veterans throughout Hendry County.

LaBelle - We're Growing!!

Greater LaBelle Chamber of Commerce

By Diane E. Fidanza

Executive director, LaBelle Chamber of Commerce

What comes to mind when you think of LaBelle? A quiet, little town nestled alongside the Caloosahatchee River that has huge, live oak trees lining the streets? Yes... LaBelle is that, and so much more.

LaBelle has abundant land, natural beauty, and friendly people. It's only natural that developers would take notice, and they have. Both commercial and residential developers are seeing this potential, and are excited by it.

As more people wish to settle in LaBelle the need for new housing becomes more and more apparent. Several housing developments are under construction, with more in the planning stages. D. R. Horton is building single family homes in the Port LaBelle area. Belle Arbor will feature single family homes and is being constructed next to the LaBelle Brewery. City Village, another residential community, is being built between Lee Street and Missouri Street. And, hoping to fill the need for apartments, Oakwood Terrace, a 56 unit apartment complex, is being constructed at the intersection of Lee Street and Oklahoma Street.

With more people living here the need for medical care is sure to increase. Hendry County Regional Medical Center, as well as Lee Health, already serve the community. However, to assist with this expanding growth a new family practice has opened. Dr. Valaree Luck, and her staff, operating as Three Oaks Family Practice, is located in the Wallace Center on Cowboy Way. Ground is also being broken for the new walk-in

Medi-Center which will be constructed next to K & M Drugs.

Large Corporations such as the 7-11 Corporation have also taken notice of this growth in LaBelle. They have constructed a large, new facility on South Main Street, and they have plans for another site to be constructed on East Hickpochee Ave. where SeaCoast Bank had previously been located.

Restaurants are also growing and developing. Short Cakes Sweet Shop & Bakery, a local favorite for sweet treats, has re-located to the LaBelle Airport on Cowboy Way. This new location allows them to have inside seating for their guests, as well as to expand their menu. They join Two Peas Café, The Forrey Grill, The Quart House Restaurant, as well as others, who serve delicious meals. Another existing business, Sub-Way Sandwich Shop, has built a new building on the corner of Hickpochee Ave. and Lee Street. This building will not only be their new location, it will also have spaces available for other businesses to rent.

A quick meal everyone seems to enjoy is pizza, and LaBelle residents agree. Pizza is very popular here in LaBelle. A long time favorite is Sal Cal Pizza on S. Main Street. There are also several other chain pizza shops, and we can now add Domino's Pizza and Pappa John's to that mix of existing pizzeria's.

These, and many other businesses, are the recent growth here in LaBelle. Our area does have a great deal to offer, and this is why growth is happening to the North, South, East and West of our community.

The LaBelle Chamber of Commerce, and its approximately 250 members, is excited and encouraged by this growth. We look forward to LaBelle's future with eager anticipation!



Airglades Airport

Jet Fueling the Economy in 2021

By Lillie B. Rodriguez

President & Airport Manager, Airglades International Airport

In the heart of Florida, Hendry County will soon welcome a first-of-its-kind international airport cargo hub to its agriculture region: Airglades International Airport (AIA).

Airglades International Airport (AIA) will be the first privatized commercial cargo airport in the United States and bring efficiency and innovation to the trade and logistics industry of South Florida. Strategically located on US HWY 27, a logistics corridor in South Florida and approximately 87 miles west of Miami, the airport, once completed, will be situated on more than 3,000 acres, will include a new 10,000 foot runway and a one-stop shop perishable cargo complex to send and receive perishable goods to all Latin American cargo hubs. The result will be shorter flight times for cargo airlines, reduced travel distances and less congestion for semi-trailer trucks. Additionally, other perishable users, customs/USDA inspectors, importers and growers will also gain a streamlined logistics chain as the new project will consolidate customs locations for timely product inspection and result in less wait time on the tarmac. Once completed, the Airglades Airport expansion will help to reduce delays of domestic shipments of temperature and time sensitive goods, which in turn leads to less product spoilage and longer shelf life

for commodities such as fresh cut flowers, produce, seafood and other perishable items sold throughout the United States.

This unique and exciting project presents the region with significant new economic opportunity. Airglades will be a game changer for Hendry County and will not only create jobs for nearby families, but will also increase local tax revenues and diversify the region's economy by adding global trade, air commerce and logistics to its existing portfolio. During construction, the project is expected to create more than 10,000 temporary jobs and, when completed, an estimated 1,700 long-term, sustainable jobs for the future. Airglades will be a benefit to the entire Hendry area, as the county offers abundant and affordable land for warehousing, distribution centers, and other businesses that serve and support the perishable cargo industry.

What's next?

With the support of the local community and perishable cargo industry, we are well on our way to achieving the Airglades vision and are diligently working to complete the privatization approval, secure project financing, and solidify user agreements by the end of the 3rd quarter of 2021 in order to meet the project's anticipated completion date in late 2023.

For more information, please visit our website at www.airglades.com. We'd love to hear from you! Your comments, suggestions and even high-fives are welcomed.





Discover Southern Florida

Like Never Before

Escape into nature with fishing, boating, hiking, biking, birding and skyline adventures! Gain an appreciation for one of the largest agricultural communities in the United States as you experience authentic South Florida. It's unlike any other destination in the state.

Explore Florida the Natural Way

DiscoverHendryCounty.com



[/DiscoverHendry](https://www.instagram.com/DiscoverHendry)



Air Conditioning, Plumbing & Electrical

"Serving Florida since 1965"

Contact Us
863-208-5889
modernservice.com

